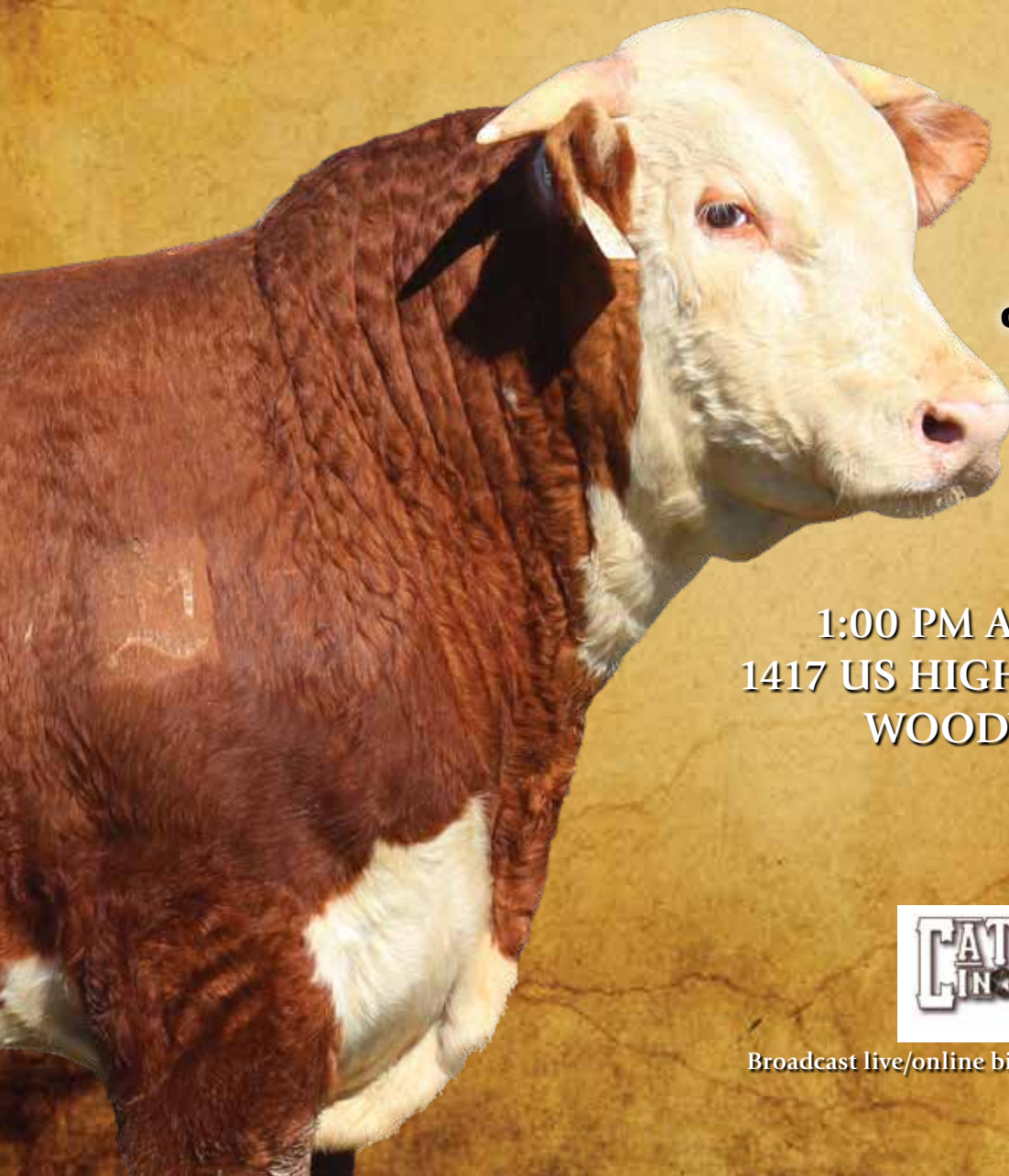


# MG/4M



## SPRING BULL & FEMALE SALE

**SATURDAY, FEBRUARY 24, 2024**



- *Home Bred*
  - *Home Raised*
  - *Home Grown*
- Backed by years  
of proven genetics**

1:00 PM AT THE FARM  
1417 US HIGHWAY 61 SOUTH  
WOODVILLE, MS



Broadcast live/online bidding at [cattleinmotion.com](http://cattleinmotion.com)

**Dear Cattlemen,**

We would like to openly invite you to be with us on February 24, 2024 for our Spring Bull & Female Sale. The sale offering has some of our top genetics, backed with proven sires and donors, that have gotten us where we are today.

This offering includes 37 Hereford bulls, 4 Angus bulls and 1 Red Angus bull. As we continue to improve the genetics of our cattle, we feel that this set stands up against any of our bulls in the past sales. Our Angus cattle have been working on the F1 side of our program, we have decided to bring our top cows back into registered production. We are excited to offer you these bulls. We breed for a balanced EPD, and strive to have cattle that are sound, efficient and have eye appeal. These bulls will excel in any scenario for your herd.

On the cow side, we are offering 31 exceptional F1 Black Baldy pairs. The pairs have been vaccinated and are currently being exposed to a Brangus bull. The F1 heifers, Braford and Blacks, are currently being exposed to a low-birth-weight Angus bull. Our heifers are always maternally bred, ensuring to be productive and efficient.

Once again, we are truly humbled and thankful for the customers and friends who supported our past sales. We are here if we can help you in any way, and look forward to seeing you on the 24th.

**Ron, Shaunna, Rylie & Stran Melancon**



The Ron & Shaunna Melancon Family

**SALE STAFF**

- Rylie Melancon ..... 601-597-5000
- Brian Langley ..... 662-665-5868
- Tommy Coley ..... 815-988-7051
- Joe Rickabaugh ..... 785-633-3188
- Cord Weinheimer ..... 830-456-3749
- Locke St. John ..... 615-427-8979



Ron 601-597-5995 | Shaunna 601-597-5996  
 Rylie Melancon 601-597-5000  
 Website: [mg4mfarms.com](http://mg4mfarms.com)  
 Facebook: [mgfarms](https://www.facebook.com/mgfarms)  
 Email: [mgfarms@bellsouth.net](mailto:mgfarms@bellsouth.net)

**TERMS & CONDITIONS**

- 1. TERMS:** Cash or check. Each animal to be sold to the highest bidder. All cattle are to be paid for immediately after the sale and will not be released until settlement has been made. Each animal will be at the purchaser's risk immediately after the animal is sold. Load out will take place following the sale.
- 2. REGISTRATION CERTIFICATES** of the animals will be transferred to the buyer at the seller's expense. Each buyer must be sure to give the clerk his proper name and address for making transfers.
- 3. EPDS:** The EPDs included were current as of January 15, 2024. The most current information can be viewed on [www.hereford.org](http://www.hereford.org).
- 4. ORDER BIDS:** Order bids may be handled by the owners or any of the sale staff. Please feel free to call.
- 5. GUARANTEE:**
  - Bulls - All Bulls have passed a breeding soundness exam (BSE) and all are virgin bulls. Bulls over 18 months will be trich tested negative as required for health papers. Non-virgin bulls will be noted.
  - Limited warranty: if a bull needs to be replaced, a bull will be substituted or a credit purchase price less salvage value of the bull will be applied toward a future purchase in our sales.
  - Bulls must be managed in a sound management program, vaccinated, wormed as needed and also run in a good pasture for a breeding season of a 60 to 120 days with appropriate number of females for age of bull. Rest and Recovery between seasons and must maintain a body condition score of 5 to meet our guarantee.
- 6. LIABILITY:** All persons who attend the sale do so at their own risk and the owners and sale manager assume no liability, legal or otherwise, for any accidents that may occur.
- 7. ANNOUNCEMENTS:** Announcements made sale day by owners or staff and supplement sheets sale day will take precedence over sale catalog.

**BROADCAST & ONLINE BIDDING**

Sale Broadcast & Online Bidding on Cattle in Motion,  
[cattleinmotion.com](http://cattleinmotion.com)



Catalog & videos available at [www.mg4mfarms.com](http://www.mg4mfarms.com)  
 and [www.hereford.org](http://www.hereford.org)

*Lunch will be served at noon.*

**ACCOMMODATIONS**

- Best Western, St. Francisville, LA ..... 225-635-5851
- Holiday Inn Express & Suites, Natchez, MS ..... 601-442-4462

# KA-CHING.

MORE POUNDS. MORE CALVES. MORE PROFIT.

Hereford bulls increase net profit by \$51 per cow per year.

That's \$20,000 in additional revenue for a typical 400-cow outfit, thanks to increased fertility and herd size.

Herefords also add efficiency and value for the folks who buy your calves — \$30 per head in feedlot profitability.

Maybe it's time to buy that Hereford bull you've had your eye on.

**COME HOME TO HEREFORD.**



Hereford.org | 816-842-3757



4M MR 111 ADVANCE 309 ET



**309 4M MR 111 ADVANCE 309 ET** {DBP}  
 BULL 44428121 || CALVED: 9/27/22 || TATTOO: LE 309 HORNED

HH ADVANCE 4075B ET {OLE,HYF,IEF,MSUDF,MDF} HH ADVANCE 1013Y ET {SOD}{OLE,HYF,IEF}  
 LF CHURCHILL 407511IE ET {OLE,HYF,IEF} HH MISS ADVANCE 0121X {OLE,HYF,IEF}  
 43891102 CHURCHILL LADY 284Z ET {OLE,HYF,IEF} CHURCHILL SENSATION 028X {SOD}{OLE,HYF,IEF,MDF,DBP}  
 CHURCHILL LADY 6109S ET {OLE,HYF,IEF}  
 CL 1 DOMINO 2109Z {SOD}{OLE,HYF,IEF} CL 1 DOMINO 994W 1ET {OLE,HYF,IEF}  
 4M MS REMEDYS ADVANCE 923 {OLE,HYF,IEF,MSUDF,DBP} CL 1 DOMINETTE 759T 1ET {OLE,HYF,IEF}  
 P44037041 ALSK MS REMDEY 291 {DBP} LAMBERT REMEDY 2030 75R {SOD}{OLE,HYF,IEF,MSUDE,MDF}  
 ALSK LIL MS THANG 981 {DBP}

CE	BW	WW	YW	DMI	SC	SCF	MM	M&G	MCE
1.0	3.9	63	103	0.3	0.8	12.6	27	58	0.7
MCW	UDDR	TEAT	CW	FAT	REA	MARB	BMI\$	BIIS	CHBS
100	1.10	1.10	74	0.052	0.48	0.16	307	387	126

• 309 is a stout, rugged and powerful bull. He is sired by our popular 111 bull and out of 923, who is our up-and-coming donor cow. 923 has already had calves ratio 103 for WW and YW. 309 is sure to inject power and pounds into his calves.



4M MR 666 D2 310 ET



**310 4M MR 666 D2 310 ET** {DBP}  
 BULL P44428123 || CALVED: 10/1/22 || TATTOO: LE 310 POLLED

KCF BENNETT REVOLUTION X51 {SOD}{CHB}{OLE,HYF,IEF,MDF,DBP} MSU TCF REVOLUTION 4R {SOD}{OLE,HYF,IEF,MDF,DBP}  
 WALKER KRM DEALER X51140 666D {CHB}{OLE,HYF,IEF,MSUDF} KCF MISS PROFICIENT U201 {OLE,HYF,IEF,MSUDF,MDF}  
 P43688014 WALKER MISS W193 W19 140 {OLE,HYF,IEF} SHF WYATT P20 W193 {OLE,HYF,IEF}  
 SNOWSHOE P606 PERFECT MISS W19 {OLE,HYF,IEF}  
 ASM 156T Y-AXIS 206Z {OLE,HYF,IEF,DBP} CMR GVP MR MATERNAL 156T {SOD}{OLE,HYF,IEF,MSUDF,MDF}  
 DW 9050 Y-AXIS LADY FRANCIS D2 {OLE,HYF,IEF,MSUDE,DBP} ASM 122L MISS 705ET {OLE,HYF,IEF,DBP}  
 P43671812 DW MISS FRANIE 9050 Y24 BOYD WORLDWIDE 9050 ET {SOD}{OLE,HYF,IEF,MSUDE,MDF,DBP}  
 CAVALIER 26J 209

CE	BW	WW	YW	DMI	SC	SCF	MM	M&G	MCE
-4.9	4.2	59	92	0.2	1.0	20.7	29	58	-0.9
MCW	UDDR	TEAT	CW	FAT	REA	MARB	BMI\$	BIIS	CHBS
99	1.30	1.30	72	-0.008	0.76	0.14	433	511	126

• 310 has true power and genuine shape, along with being in the top 7% for Fat and 6% for REA. These 666 sons never disappoint. He is also ranked in the top 14% for SCF and top 15% for BMI and BI. Whether you are sending calves to the rail or keeping daughters, these 666 sons can do it for you. Full brother to Lots 311 and 322.



4M MR DEALER D2 311 ET



**311 4M MR DEALER D2 311 ET** {DBP}  
 BULL P44428124 || CALVED: 10/1/22 || TATTOO: LE 311 POLLED

KCF BENNETT REVOLUTION X51 {SOD}{CHB}{OLE,HYF,IEF,MDF,DBP} MSU TCF REVOLUTION 4R {SOD}{OLE,HYF,IEF,MDF,DBP}  
 WALKER KRM DEALER X51140 666D {CHB}{OLE,HYF,IEF,MSUDF} KCF MISS PROFICIENT U201 {OLE,HYF,IEF,MSUDF,MDF}  
 P43688014 WALKER MISS W193 W19 140 {OLE,HYF,IEF} SHF WYATT P20 W193 {OLE,HYF,IEF}  
 SNOWSHOE P606 PERFECT MISS W19 {OLE,HYF,IEF}  
 ASM 156T Y-AXIS 206Z {OLE,HYF,IEF,DBP} CMR GVP MR MATERNAL 156T {SOD}{OLE,HYF,IEF,MSUDF,MDF}  
 DW 9050 Y-AXIS LADY FRANCIS D2 {OLE,HYF,IEF,MSUDE,DBP} ASM 122L MISS 705ET {OLE,HYF,IEF,DBP}  
 P43671812 DW MISS FRANIE 9050 Y24 BOYD WORLDWIDE 9050 ET {SOD}{OLE,HYF,IEF,MSUDE,MDF,DBP}  
 CAVALIER 26J 209

CE	BW	WW	YW	DMI	SC	SCF	MM	M&G	MCE
-4.9	4.2	59	92	0.2	1.0	20.7	29	58	-0.9
MCW	UDDR	TEAT	CW	FAT	REA	MARB	BMI\$	BIIS	CHBS
99	1.30	1.30	72	-0.008	0.76	0.14	433	511	126

• 311 is just like his full brothers, 310 and 322, packed with dimension and power, soft and soggy made. 311 ranks in the top 7% for Fat, 6% for REA, 14% for SCF and 15% for BMI and BI. Grab these full brothers to make your calf crop more consistent!

### 317 4M MR 111 ADVANCE 317

BULL 44428199 || CALVED: 10/6/22 || TATTOO: LE 317 HORNED

HH ADVANCE 4075B ET (DLF,HYF,IEF,MSUDF,MDF) HH ADVANCE 1013Y ET (SDD)(DLF,HYF,IEF)  
 LF CHURCHILL 407511E ET (DLF,HYF,IEF) HH MISS ADVANCE 0121X (DLF,HYF,IEF)  
 43891102 CHURCHILL LADY 284Z ET (DLF,HYF,IEF) CHURCHILL SENSATION 028X (SDD)(DLF,HYF,IEF,MDF,DBF)  
 CHURCHILL LADY 6109S ET (DLF,HYF,IEF)  
 HH ADVANCE 3297A ET (SDD)(CHB)(DLF,HYF,IEF) CL 1 DOMINO 091X (CHB)(DLF,HYF,IEF)  
 4M MS BOOMYS ADVANCE 904 ET (DLF,HYF,IEF,MSUDF) HH MISS ADVANCE 9228W (DLF,HYF,IEF)  
 44037375 GRANDVIEW CMR MS P606 X420 ET (DLF,HYF,IEF) PW VICTOR BOOMER P606 (SDD)(DLF,HYF,IEF,MDF)  
 CS MISS SUPREME 28G (HYP)

CE	BW	WW	YW	DMI	SC	SCF	MM	M&G	MCE
0.4	4.0	58	89	0.2	1.0	18.9	29	58	2.6
MCW	UDDR	TEAT	CW	FAT	REA	MARB	BMI\$	BIIS	CHBS
86	1.20	1.20	78	0.032	0.51	0.20	404	485	133

• 317 is another powerful 111 son. This easy keeping bull is built to go out and get the job done. 317 ratioed a 107 for WW with a solid set of EPD numbers. His dam records a progeny ratio of 3 @ 106 for WW and 2 @ 103 for YW.



4M MR 111 ADVANCE 317



### 318 4M MR 322A SENSATION 318 (DBP)

BULL P44428201 || CALVED: 10/6/22 || TATTOO: LE 318 POLLED

NIW 73S W18 HOMETOWN 10Y ET (SDD)(CHB)(DLF,HYF,IEF,MSUDF,MDF) SHF WONDER M326 W18 ET (SDD)(CHB)(DLF,HYF,IEF,MDF,DBF)  
 ILR HOMETOWN 332A ET (DLF,HYF,IEF,MSUDF,MDF) NIW P606 72N DAYDREAM 73S (DLF,HYF,IEF,MSUDF,MDF)  
 P43385499 NIW 43T 4037 FOREVER EDNA 28X ET (DLF,HYF,IEF) THM DURANGO 4037 (SDD)(DLF,HYF,IEF)  
 NIW FOREVER RADIANT 43T ET (DLF,HYF,IEF)  
 ECR SENSATION 19-254 (DLF,HYF,IEF,MSUDF,DBP) CHURCHILL SENSATION 028X (SDD)(DLF,HYF,IEF,MDF,DBF)  
 4M MS MAYBELLS SENSATION 988 (DBP) ECR MISS ELLA MICHELLE 24-214 (DLF,HYF,IEF)  
 P44060352 4M TRUST ME MAYBELL 764 (DBP) JBB/AL TRUST 3079ET (DLF,HYF,IEF)  
 ABG 0124 ROCKIN TIME 4004 ET (DBP)

CE	BW	WW	YW	DMI	SC	SCF	MM	M&G	MCE
9.3	0.4	50	88	0.3	1.1	17.1	30	55	5.8
MCW	UDDR	TEAT	CW	FAT	REA	MARB	BMI\$	BIIS	CHBS
88	1.20	1.20	68	-0.008	0.51	0.12	365	432	121

• 318 is a heifer bull. His pedigree needs no introduction having 10Y, Trust 100W and Sensation in it. 318 ratioed a 102 for WW. He is a growthy power bull that can do it all. 318 ranks in the top 10% for BW and WW.



4M MR 322A SENSATION 318



### 322 4M MR D2 DEALER 322 ET (DBP)

BULL P44428212 || CALVED: 10/7/22 || TATTOO: LE 322 POLLED

KCF BENNETT REVOLUTION X51 (SDD)(CHB)(DLF,HYF,IEF,MDF,DBF) MSU TCF REVOLUTION 4R (SDD)(DLF,HYF,IEF,MDF,DBF)  
 WALKER KRM DEALER X51 140 666D (CHB)(DLF,HYF,IEF,MSUDF) KCF MISS PROFICIENT U201 (DLF,HYF,IEF,MSUDF,MDF)  
 P43688014 WALKER MISS W193 W19 140 (DLF,HYF,IEF) SHF WYATT P20 W193 (DLF,HYF,IEF)  
 SNOWSHOE P606 PERFECT MISS W19 (DLF,HYF,IEF)  
 ASM 156T Y-AXIS 206Z (DLF,HYF,IEF,DBP) CMR GVP MR MATERNAL 156T (SDD)(DLF,HYF,IEF,MSUDF,MDF)  
 DW 9050 Y-AXIS LADY FRANCIS D2 (DLF,HYF,IEF,MSUDF,DBP) ASM 122L MISS 705ET (DLF,HYF,IEF,DBP)  
 P43671812 DW MISS FRANIE 9050 Y24 BOYD WORLDWIDE 9050 ET (SDD)(DLF,HYF,IEF,MSUDF,MDF,DBF)  
 CAVALIER 26J 209

CE	BW	WW	YW	DMI	SC	SCF	MM	M&G	MCE
-4.9	4.2	59	92	0.2	1.0	20.7	29	58	-0.9
MCW	UDDR	TEAT	CW	FAT	REA	MARB	BMI\$	BIIS	CHBS
99	1.30	1.30	72	-0.008	0.76	0.14	433	511	126

• 322 is stout, rugged and carrying lots of red meat, just to describe a few of his attributes. We think very highly of this bull and it's easy to see why. No matter the direction of your operation, this guy is an asset. 322 ranks in the top 7% for Fat, 6% for REA, 14% for SCF and 15% for BMI and BI. Full brother to Lots 310 and 311.



4M MR D2 DEALER 322 ET





4M MR 111 DEALER 323



**323 4M MR 111 DEALER 323** {DBP}  
 BULL 44428213 || CALVED: 10/9/22 || TATTOO: LE 323 HORNED

HH ADVANCE 4075B ET {DLF,HYF,IEF,MSUDF,MDF} HH ADVANCE 1013Y ET {SOD}{DLF,HYF,IEF}  
 LF CHURCHILL 4075 111E ET {DLF,HYF,IEF} HH MISS ADVANCE 0121X {DLF,HYF,IEF}  
 43891102 CHURCHILL LADY 284Z ET {DLF,HYF,IEF} CHURCHILL SENSATION 028X {SOD}{DLF,HYF,IEF,MDF,DBF}  
 CHURCHILL LADY 6109S ET {DLF,HYF,IEF}  
 WALKER KRM DEALER X51 140 666D {CHB}{DLF,HYF,IEF,MSUDF} KCF BENNETT REVOLUTION X51 {SOD}{CHB}{DLF,HYF,IEF,MDF,DBF}  
 4M MS ABOUT DEALER TIME 935 {DLF,HYF,IEF,MSUDF,DBP} WALKER MISS W193 W19 140 {DLF,HYF,IEF}  
 P44031603 JBB 1101 MS ABOUT TIME 4128 {IEP,DBP} C GOHR 9158 ABOUT TIME 1101 {DLF,HYF,IEF,DBP}  
 JBB MS HARLAND 995 {IEP}

CE	BW	WW	YW	DMI	SC	SCF	MM	M&G	MCE
2.5	3.5	60	90	0.2	1.0	17.6	25	56	0.4
MCW	UDDR	TEAT	CW	FAT	REA	MARB	BMI\$	BIIS	CHBS
78	1.20	1.30	74	0.032	0.56	0.19	380	462	127

• 323 is flat out good! This horned, red legged 111 son goes back to an extremely productive 666 daughter who is truly impressing us. 323 ratioed 104 for WW. Don't overlook this guy.



4M MR 666 VICTOR BOOMER 325



**325 4M MR 666 VICTOR BOOMER 325** {DLF,HYF,IEF,MSUDF}  
 BULL P44428214 || CALVED: 10/9/22 || TATTOO: LE 325 POLLED

KCF BENNETT REVOLUTION X51 {SOD}{CHB}{DLF,HYF,IEF,MDF,DBF} MSU TCF REVOLUTION 4R {SOD}{DLF,HYF,IEF,MDF,DBF}  
 WALKER KRM DEALER X51 140 666D {CHB}{DLF,HYF,IEF,MSUDF} KCF MISS PROFICIENT U201 {DLF,HYF,IEF,MSUDF,MDF}  
 P43688014 WALKER MISS W193 W19 140 {DLF,HYF,IEF} SHF WYATT P20 W193 {DLF,HYF,IEF}  
 SNOWSHOE P606 PERFECT MISS W19 {DLF,HYF,IEF}  
 HH ADVANCE 3297A ET {SOD}{CHB}{DLF,HYF,IEF} CL 1 DOMINO 091X {CHB}{DLF,HYF,IEF}  
 4M MS BOOMER DOMINETTE 833ET HH MISS ADVANCE 9228W {DLF,HYF,IEF}  
 P43946083 GRANDVIEW CMR MS P606 X420 ET {DLF,HYF,IEF} PW VICTOR BOOMER P606 {SOD}{DLF,HYF,IEF,MDF}  
 CS MISS SUPREME 28G {HYF}

CE	BW	WW	YW	DMI	SC	SCF	MM	M&G	MCE
0.0	3.4	58	92	0.3	1.5	24.7	29	58	3.9
MCW	UDDR	TEAT	CW	FAT	REA	MARB	BMI\$	BIIS	CHBS
74	1.30	1.40	85	0.052	1.03	0.20	502	585	143

• 325 is another extremely powerful 666 son. 325 is a high performing bull with plenty growth. 325 ratioed 109 for WW and 103 for YW. His dam records a progeny ratio of 3 @ 102.7 for WW and 3 @ 101 for YW. He also excels in the top 2% for SCF, as well excelling in his carcass traits of 1% for REA, 2% for BI and 13% for BMI.



4M MR 252 VICTOR 328 ET

**328 4M MR 252 VICTOR 328 ET** {DBP}  
 BULL P44484200 || CALVED: 10/9/22 || TATTOO: LE 328 SCURRED

NJW 160Z 10W WHIT 33B {DLF,HYF,IEF,MSUDF,MDF,DBF} LJR 023R WHITMORE 10W {SOD}{DLF,HYF,IEF,MSUDF,MDF,DBF}  
 NJW 79Z 33B FORWARD 252F {DLF,HYF,IEF,MSUDF,MDF,DBF} NJW 73S 88X DAYDREAM 160Z {SOD}{DLF,HYF,IEF,MSUDF,MDF,DBF}  
 P43943438 BW 91H 100W RITA 79Z ET {DLF,HYF,IEF,MSUDF,MDF} NJW 73S M326 TRUST 100W ET {SOD}{CHB}{DLF,HYF,IEF,MSUDF,MDF}  
 REMITALL RITA 91H {DLF,HYF,IEF}  
 TH 122 71I VICTOR 719T {SOD}{DLF,HYF,IEF,MSUDF,MDF} DRF JWR PRINCE VICTOR 71I {SOD}{DLF,HYF,IEF,MSUDF}  
 JBB MS VICTOR 294 {SOD}{DLF,HYF,IEF,MSUDF,DBP} KBCR 19D DOMINETTE 122 {DLF,HYF,IEF}  
 P43337520 JBB MS PROGRESSOR 080 {HYF,IEP,DBP} ALSK CURLY 844 {DLF,HYF,IEF,DBP}  
 AL MS PRIDE LINE 781 {HYF,IEP,DBP}

CE	BW	WW	YW	DMI	SC	SCF	MM	M&G	MCE
0.6	3.8	65	106	0.4	1.1	16.8	29	62	0.6
MCW	UDDR	TEAT	CW	FAT	REA	MARB	BMI\$	BIIS	CHBS
104	1.30	1.30	73	-0.018	0.49	-0.05	356	426	107

• 328 is extremely rugged, dense and powerful. If you have followed our breeding program, you know how much our 294 donor has played a role in our herd. She has a progeny ratio of 5 @ 104 for YW. 328 is just as impressive, with rankings in the top 15% for WW, 12% for YW and 7% for FAT. Full brother to Lot 349.

**331 4M MR 252 DOMINO 331** (IEP)  
**BULL P44484199 || CALVED: 10/11/22 || TATTOO: LE 331 SCURRED**

NJW 160Z 10W WHIT 33B (DLF,HYF,IEF,MSUDF,MDF,DBF)  
 NJW 79Z 33B FORWARD 252F (DLF,HYF,IEF,MSUDG,MDF,DBF)  
 P43943438 BW 91H 100W RITA 79Z ET (DLF,HYF,IEF,MSUDF,MDF)  
 SF DOMINO 163 (DLF,HYF,IEF,MSUDF)  
 4M DOMINETTE 516 (IEP)  
 43613576 SF L1 DOMINETTE 0010 (IEP)

LJR 023R WHITMORE 10W (SDD)(DLF,HYF,IEF,MSUDF,MDF,DBF)  
 NJW 73S 88X DAYDREAM 160Z (DOD)(DLF,HYF,IEF,MSUDF,MDF)  
 NJW 73S M326 TRUST 100W ET (SDD)(CHB)(DLF,HYF,IEF,MSUDF,MDF)  
 REMITAL RITA 91H (DLF,HYF,IEF)  
 JBB/AL LARSON 986 (DLF)  
 WJ DOMINETTE 8003 (IEP)  
 HH ADVANCE 7115T  
 WJ DOMINETTE 8002 (IEP)

CE	BW	WW	YW	DMI	SC	SCF	MM	M&G	MCE
11.4	0.1	49	81	0.4	0.7	17.1	27	52	7.7
MCW	UDDR	TEAT	CW	FAT	REA	MARB	BMI\$	BIIS	CHBS
91	1.30	1.30	74	0.012	0.49	0.12	363	430	119

- Selling ½ interest and ½ possession
- 331 is a sleep at night heifer bull, who is docile, deep red with good pigment. His pedigree is packed with longevity. 331 ranks in the top 5% for CED, 8% for BW, and he ratioed at 102 for YW. His sire, 252F, was Iron Lake Ranches pick in the NJW 2019 bull sale for \$75,000. His maternal grandsire, 163, can be found in a lot of our cattle pedigrees.



4M MR 252 DOMINO 331



**332 4M MR 111 ADVANCE 332**  
**BULL P44428222 || CALVED: 10/11/22 || TATTOO: LE 332 SCURRED**

HH ADVANCE 4075B ET (DLF,HYF,IEF,MSUDF,MDF)  
 LF CHURCHILL 4075 111E ET (DLF,HYF,IEF)  
 43891102 CHURCHILL LADY 284Z ET (DLF,HYF,IEF)  
 HH ADVANCE 1013Y ET (SDD)(DLF,HYF,IEF)  
 HH MISS ADVANCE 0121X (DLF,HYF,IEF)  
 CHURCHILL SENSATION 028X (SDD)(DLF,HYF,IEF,MDF,DBF)  
 CHURCHILL LADY 6109S ET (DLF,HYF,IEF)  
 HH ADVANCE 3297A ET (SDD)(CHB)(DLF,HYF,IEF)  
 CL 1 DOMINO 091X (CHB)(DLF,HYF,IEF)  
 4M MS ADVANCED LADY 942ET (DLF,HYF,IEF,MSUDF)  
 HH MISS ADVANCE 9228W (DLF,HYF,IEF)  
 P44037372 GRANDVIEW CMR MS P606 X420 ET (DLF,HYF,IEF)  
 PW VICTOR BOOMER P606 (SDD)(DLF,HYF,IEF,MDF)  
 CS MISS SUPREME 28G (HYP)

CE	BW	WW	YW	DMI	SC	SCF	MM	M&G	MCE
6.6	1.8	56	91	0.2	1.0	16.5	30	58	5.5
MCW	UDDR	TEAT	CW	FAT	REA	MARB	BMI\$	BIIS	CHBS
95	1.20	1.20	76	0.042	0.48	0.26	372	455	140

- 332 is a heifer bull. His dam records a progeny ratio of 3 @101 for YW. He ranks in the top 16% for Marbling and top 14% for CHB.



4M MR 111 ADVANCE 332



**334 4M MR 2079 DOMINO DEALER 334**  
**BULL P44428224 || CALVED: 10/13/22 || TATTOO: LE 334 POLLED**

/S MANDATE 66589 ET (CHB)(DLF,HYF,IEF,MSUDF,MDF,DBF)  
 4M 66589 DOMINO 2079 ET (DLF,HYF,IEF,MSUDF)  
 44108234 JW Z311 DOMINETTE 1608 ET (DLF,HYF,IEF,MSUDF)  
 R LEADER 6964 (SDD)(DLF,HYF,IEF,MSUDF,DBF)  
 /S LADY DOMINO 0158X (DLF,HYF,IEF)  
 KCF BENNETT ENCORE Z311 ET (SDD)(CHB)(DLF,HYF,IEF,MSUDF,MDF,DBF)  
 CMR GV 484 MISS 5413 (DOD)(DLF,HYF,IEF)  
 WALKER KRM DEALER X51 140 666D (CHB)(DLF,HYF,IEF,MSUDF)  
 KCF BENNETT REVOLUTION X51 (SDD)(CHB)(DLF,HYF,IEF,MDF,DBF)  
 4M MS DOMINETTE DEALER 053 (DLF,HYF,IEF,MSUDF)  
 WALKER MISS W193 W19 140 (DLF,HYF,IEF)  
 P44116278 4M DOMINETTE 606 523  
 SF DOMINO 163 (DLF,HYF,IEF,MSUDF)  
 CMR GRANDVIEW MISS 136N 114S (DLF,HYF,IEF,MSUDF)

CE	BW	WW	YW	DMI	SC	SCF	MM	M&G	MCE
2.8	3.2	74	113	1.1	1.6	16.0	29	66	3.9
MCW	UDDR	TEAT	CW	FAT	REA	MARB	BMI\$	BIIS	CHBS
125	1.30	1.30	83	0.042	0.60	0.24	357	455	127

- 334 is definitely a looker! Deep red, short marked with goggle eyes. He is stout and sound. This 2079 son will sire some good replacements. 334 ranks in the top 2% for WW, 6% for YW, top 5% for SC, top 30% for MM, Udder and Teat. He also ratioed a 124 for WW and 108 for YW.



4M MR 2079 DOMINO DEALER 334





4M MR 2079 VICTOR 339 ET



**339 4M MR 2079 VICTOR 339 ET**  
 BULL P44428230 || CALVED: 10/13/22 || TATTOO: LE 339 POLLED

/S MANDATE 66589 ET (CHB) (DLF,HYF,IEF,MSUDF,MDF,DBF) R LEADER 6964 (S00) (DLF,HYF,IEF,MSUDF,DBF)  
 4M 66589 DOMINO 2079 ET (DLF,HYF,IEF,MSUDF) /S LADY DOMINO 0158X (DLF,HYF,IEF)  
 44108234 JW Z311 DOMINETTE 1608 ET (DLF,HYF,IEF,MSUDF) KCF BENNETT ENCORE Z311 ET (S00) (CHB) (DLF,HYF,IEF,MSUDF,MDF,DBF)  
 CMR GV 484 MISS 5413 (D00) (DLF,HYF,IEF)  
 CMR LPH BOOMER P606 136N PW VICTOR BOOMER P606 (S00) (DLF,HYF,IEF,MDF)  
 CMR GRANDVIEW MISS 136N 114S (DLF,HYF,IEF,MSUDF) CMR VICTRIA Y655 0682  
 P42724689 BOTKIN VICTORIA 9104 930 (HYF) PW NICK 9104 (S00) (HYF)  
 BOTKINS MT MISS 4W-527

CE	BW	WW	YW	DMI	SC	SCF	MM	M&G	MCE
5.3	1.7	59	97	0.7	1.1	21.5	30	59	4.0
MCW	UDDR	TEAT	CW	FAT	REA	MARB	BMI\$	BIIS	CHBS
109	1.30	1.40	70	0.052	0.29	0.18	418	503	110

• 339 is a heifer bull. His dam, 114S, played an important part in our herd building success. If you are looking to make replacements, 339 is the one. 339 ranks on the top 9% for SCF, 20% Udder, 10% Teat and 14% for BMI and BI. His dam records a progeny ratio of 10 @ 105 for WW and 6 @ 103 for YW.



4M MR 55000 HAWK 342



**342 4M MR 55000 HAWK 342**  
 BULL P44453240 || CALVED: 10/13/22 || TATTOO: LE 342 POLLED

/S PEERLESS 1571Y (DLF,HYF,IEF) HH ADVANCE 286M 1ET (S00) (DLF,IEF)  
 /S PEERLESS 55000 ET (DLF,HYF,IEF,MSUDF) /S LADY DOMINO 652S (DLF,IEF)  
 43616719 /S LADY DOMINO 9144W (DLF,HYF,IEF) UPS DOMINO 3027 (S00) (CHB) (DLF,HYF,IEF,MSUDF,MDF)  
 /S LADY ADVANCE 7291T (DLF,HYF,IEF)  
 GRANDVIEW CMR HAWK LI ADV 918X (DLF,HYF,IEF) HH ADVANCE 7034T ET (DLF,HYF,IEF)  
 WHITEHAWK 918 BEEFMAID 754B (DLF,HYF,IEF,MSUDF) HH MISS ADVANCE 6083S (DLF,IEF)  
 P43519663 SF VICTORIA 114 768 (HYF) JMS VICTOR 892 114 (DLF,HYF,IEF)  
 SF VICTORIA 501 003 (D00) (HYF)

CE	BW	WW	YW	DMI	SC	SCF	MM	M&G	MCE
-3.3	5.8	58	94	0.4	1.4	21.4	27	57	-0.6
MCW	UDDR	TEAT	CW	FAT	REA	MARB	BMI\$	BIIS	CHBS
81	1.40	1.50	77	0.032	0.44	-0.09	417	482	101

• 342 is a dark red bull with plenty growth. He is sired by the well known /S Peerless 55000 bull, who was very productive for Shaw Cattle. If you are needing to fix some udder issues, he excels in indexes ranking in the top 6% for Udder and 3% for Teat. 342 ratioed a 101 for WW and 106 for YW. His dam records a progeny ratio of 7 @ 101.3 for WW and 7 @ 101 for YW.



4M MR FRONTIER DEALER 345



**345 4M MR FRONTIER DEALER 345**  
 BULL P44484197 || CALVED: 10/14/22 || TATTOO: LE 345 POLLED

TH 403A 4752 PIONEER 358C ET (S00) (DLF,HYF,IEF,MSUDF) TH 89T 755T STOCKMAN 475Z (S00) (DLF,HYF,IEF)  
 TH FRONTIER 174E (DLF,HYF,IEF,MSUDF,MDF) TH 71U 17Y RITA 403A (DLF,HYF,IEF)  
 P43818822 FTF TRUSTING LADY 312A (DLF,HYF,IEF) NIW 73S M326 TRUST 100W ET (S00) (CHB) (DLF,HYF,IEF,MSUDF,MDF)  
 FTF BOOM AND BLOOM 8211U (DLF,HYF,IEF)  
 WALKER KRM DEALER X51 140 666D (CHB) (DLF,HYF,IEF,MSUDF) KCF BENNETT REVOLUTION X51 (S00) (CHB) (DLF,HYF,IEF,MDF,DBF)  
 4M MISS DOMINO DEALER 936 (DLF,HYF,IEF,MSUDF) WALKER MISS W193 W19 140 (DLF,HYF,IEF)  
 P44031605 4M DOMINETTE 522 (HYF) SF DOMINO 163 (DLF,HYF,IEF,MSUDF)  
 JP ADVANCED 255 (D00) (HYF)

CE	BW	WW	YW	DMI	SC	SCF	MM	M&G	MCE
-3.7	5.0	70	118	0.2	1.3	20.7	36	71	-0.9
MCW	UDDR	TEAT	CW	FAT	REA	MARB	BMI\$	BIIS	CHBS
106	1.20	1.20	73	0.032	0.66	-0.05	427	505	114

• Selling 1/2 interest and 1/2 possession  
 • Here is a head turner and herd changer. 345 has been a favorite since the day he was born. Dark red, red eyes and very rugged made. This 174E son is out of an impressive 666 daughter. 345 is extremely high performing, as he ratioed 102 for WW and 104 for YW. He ranks in the top 5% for WW, 3% for YW, 5% for Milk and top 15% for BMI and BI. His dam records a progeny ratio of 2 @ 104 for YW.



**347 4M MR 322 REDMAN 347** {DBP}  
**BULL P44496451 || CALVED: 10/16/22 || TATTOO: LE 347 SCURRED**

/S MANDATE 66589 ET {CHB}{DLF,HYF,IEF,MSUDF,MDF,DBF}  
 4M LF REDMAN 322 ET {DLF,HYF,IEF,MSUDF,DBP}  
 P44160384 TDP PEANUT 5X {DLF,HYF,IEF,MSUDF,DBP}

NJW 79Z 33B FORWARD 252F {DLF,HYF,IEF,MSUDF,MDF,DBF}  
 4M MS FORWARD COWGIRL 132E  
 44245360 JBB/AL COWGIRL 021 {DLF,HYF,IEF,MSUDF}

R LEADER 6964 {SOD}{DLF,HYF,IEF,MSUDF,DBF}  
 /S LADY DOMINO 0158X {DLF,HYF,IEF}  
 BKR SANDERSON 73C 60S {DLF,HYF,IEF}  
 TDP PEANUT 404U ET {DOD}{DLF,HYF,IEF,DBP}

NJW 160Z 10W WHIT 33B {DLF,HYF,IEF,MSUDF,MDF,DBF}  
 BW 9IH 100W RITA 79Z ET {DLF,HYF,IEF,MSUDF,MDF}  
 /S COWBOY LOGIC 4668 {DLF,HYF,IEF}  
 JBB/AL MS BENNETT 743 {DLF}

CE	BW	WW	YW	DMI	SC	SCF	MM	M&G	MCE
5.1	0.1	47	78	0.1	0.8	18.7	23	46	0.9
MCW	UDDR	TEAT	CW	FAT	REA	MARB	BMI\$	BIIS	CHBS
101	1.40	1.30	66	0.042	0.30	0.15	382	451	114

• 347 is a heifer bull. He is big boned, stout and easy keeping. His pedigree goes back to our 021 donor who was very productive for us. 347 is in the top 8% for BW, 25% for DMI and 7% for Udder.



4M MR 322 REDMAN 347



**349 4M MR FORWARD VICTOR 349 ET** {DBP}  
**BULL P44484195 || CALVED: 10/18/22 || TATTOO: LE 349 POLLED**

NJW 160Z 10W WHIT 33B {DLF,HYF,IEF,MSUDF,MDF,DBF}  
 NJW 79Z 33B FORWARD 252F {DLF,HYF,IEF,MSUDF,MDF,DBF}  
 P43943438 BW 9IH 100W RITA 79Z ET {DLF,HYF,IEF,MSUDF,MDF}

TH 122 71I VICTOR 719T {SOD}{DLF,HYF,IEF,MSUDF,MDF}  
 JBB MS VICTOR 294 {DOD}{DLF,HYF,IEF,MSUDF,DBP}  
 P43337520 JBB MS PROGRESSOR 080 {HYF,IEF,DBP}

LJR 023R WHITMORE 10W {SOD}{DLF,HYF,IEF,MSUDF,MDF,DBF}  
 NJW 73S 88X DAYDREAM 160Z {DOD}{DLF,HYF,IEF,MSUDF,MDF}  
 NJW 73S M326 TRUST 100W ET {SOD}{CHB}{DLF,HYF,IEF,MSUDF,MDF}  
 REMITALL RITA 9IH {DLF,HYF,IEF}

DRF JWR PRINCE VICTOR 71I {SOD}{DLF,HYF,IEF,MSUDF}  
 KBCR 19D DOMINETTE 122 {DLF,HYF,IEF}  
 ALSK CURLY 844 {DLF,HYF,IEF,DBP}  
 AL MS PRIDE LINE 781 {HYF,IEF,DBP}

CE	BW	WW	YW	DMI	SC	SCF	MM	M&G	MCE
0.6	3.8	65	106	0.4	1.1	16.8	29	62	0.6
MCW	UDDR	TEAT	CW	FAT	REA	MARB	BMI\$	BIIS	CHBS
104	1.30	1.30	73	-0.018	0.49	-0.05	356	426	107

• 349 is powerful, rugged and stout. He has lots of growth and performance. He ranks in the top 16% for WW, 12% for YW and 7% for Fat. His dam records a progeny ratio of 5 @ 104.2 for YW. Full brother to Lot 328.



4M MR FORWARD VICTOR 349 ET

**352 4M MR 322 RED RIDER 352** {DBP}  
**BULL P44428252 || CALVED: 10/20/22 || TATTOO: LE 352 SCURRED**

/S MANDATE 66589 ET {CHB}{DLF,HYF,IEF,MSUDF,MDF,DBF}  
 4M LF REDMAN 322 ET {DLF,HYF,IEF,MSUDF,DBP}  
 P44160384 TDP PEANUT 5X {DLF,HYF,IEF,MSUDF,DBP}

CHURCHILL ROUGH RIDER 719E {DLF,HYF,IEF,MSUDF}  
 4M MS VICKY RIDER 106 ET {DLF,HYF,IEF,MSUDF}  
 P44225717 BL VICKY 13P U50 {HYF}

R LEADER 6964 {SOD}{DLF,HYF,IEF,MSUDF,DBF}  
 /S LADY DOMINO 0158X {DLF,HYF,IEF}  
 BKR SANDERSON 73C 60S {DLF,HYF,IEF}  
 TDP PEANUT 404U ET {DOD}{DLF,HYF,IEF,DBP}

HH ADVANCE 5044C ET {DLF,HYF,IEF,MSUDF}  
 CHURCHILL LADY 518C {DLF,HYF,IEF}  
 REMITALL PATRIOT ET 13P {SOD}{CHB}{DLF,HYF,IEF,DBF}  
 CMR VICKY 8006 P21 {HYF}

CE	BW	WW	YW	DMI	SC	SCF	MM	M&G	MCE
5.1	-0.8	49	81	0.2	1.3	20.9	23	48	4.8
MCW	UDDR	TEAT	CW	FAT	REA	MARB	BMI\$	BIIS	CHBS
122	1.40	1.40	69	0.072	0.33	0.27	422	504	123

• 352 is a big-time heifer bull. He is a Mandate grandson backed by our U50 donor. He is in the top 20% for SC, 18% for SCF, 7% for Udder and 11% for Teat, 15% for Marbling and 20% for BMI and BI. He would be a great one on a set of commercial cows to keep replacements.



4M MR 322 RED RIDER 352





4M MR 9364 REMEDY 353



### 353 4M MR 9364 REMEDY 353

BULL P44428253 || CALVED: 10/20/22 || TATTOO: LE 353 POLLED

CL 1 DOMINO 215Z (SOD)(CHB)(DLF,HYF,IEF,MSUDF,MDF)  
 B&D LI DOMINO 9364 ET (DLF,HYF,IEF,MSUDF,MDF) 44116860  
 HH MISS ADVANCE 0041X ET (DLF,HYF,IEF)  
 LAMBERT REMEDY 2030 75R (SOD)(DLF,HYF,IEF,MSUDF,MDF)  
 JBB/AL MS REMEDY 292 ET (DLF,HYF,IEF) 443337742  
 JBB MS PHASE 368 (DLF,HYF,IEF)

CL 1 DOMINO 9122W 1ET (CHB)(DLF,HYF,IEF)  
 CL 1 DOMINETTE 055X (DOB)(DLF,HYF,IEF)  
 HH ADVANCE 7034T ET (DLF,HYF,IEF)  
 HH MISS ADVANCE 5139R ET (DLF,HYF,IEF)  
 C L R DIESEL 2030 ET (DLF,IEF)  
 CS VICKI 637B 34K (HYP)  
 CMF RF GENETIC PHASE (HYP)  
 JBB 5102 MS ADY 067 (IEP)

CE	BW	WW	YW	DMI	SC	SCF	MM	M&G	MCE
6.4	2.2	57	85	0.1	0.9	20.9	25	54	4.2
MCW	UDDR	TEAT	CW	FAT	REA	MARB	BMI\$	BIIS	CHBS
80	1.30	1.40	75	0.042	0.35	0.16	424	505	125

• 353 is a high performing 9364 son, that's out of a 12-year-old dam who is still in production. 353 is a heifer bull that's in the top 11% for Teat, top 16% for BMI and BI.



4M MR 9364 DOMINO 357



### 357 4M MR 9364 DOMINO 357

BULL 44428396 || CALVED: 10/24/22 || TATTOO: LE 357 HORNED

CL 1 DOMINO 215Z (SOD)(CHB)(DLF,HYF,IEF,MSUDF,MDF)  
 B&D LI DOMINO 9364 ET (DLF,HYF,IEF,MSUDF,MDF) 44116860  
 HH MISS ADVANCE 0041X ET (DLF,HYF,IEF)  
 HH ADVANCE 3297A ET (SOD)(CHB)(DLF,HYF,IEF)  
 4M MS BOOMER DOMINETTE 807ET 43946085  
 GRANDVIEW CMR MS P606 X420 ET (DLF,HYF,IEF)

CL 1 DOMINO 9122W 1ET (CHB)(DLF,HYF,IEF)  
 CL 1 DOMINETTE 055X (DOB)(DLF,HYF,IEF)  
 HH ADVANCE 7034T ET (DLF,HYF,IEF)  
 HH MISS ADVANCE 5139R ET (DLF,HYF,IEF)  
 CL 1 DOMINO 091X (CHB)(DLF,HYF,IEF)  
 HH MISS ADVANCE 9228W (DLF,HYF,IEF)  
 PW VICTOR BOOMER P606 (SOD)(DLF,HYF,IEF,MDF)  
 CS MISS SUPREME 28G (HYP)

CE	BW	WW	YW	DMI	SC	SCF	MM	M&G	MCE
5.5	2.1	58	86	0.3	1.2	33.7	31	60	4.7
MCW	UDDR	TEAT	CW	FAT	REA	MARB	BMI\$	BIIS	CHBS
65	1.30	1.50	67	0.052	0.28	0.12	592	680	104

• 357 is a very complete and impressive 9364 son, who is a heifer bull candidate. His dam, 807, goes back to X420, one of our first donor cows. 357's phenotype of power, ruggedness and body are just a few of his attributes. He is in the top 1% for SCF, 20% for Udder, 3% for Teat, and 1% for BMI and BI. He ratioed a 104 for WW and 105.4 for YW. His dam records a progeny ratio of 3 @ 103.3 for WW and 3 @ 105 for YW. Use him on some Angus or Brahman cows for keeping great replacements.



4M MR LEADER 310 360 ET



### 360 4M MR LEADER 310 360 ET

BULL P44486421 || CALVED: 10/25/22 || TATTOO: LE 360 POLLED

HYALITE ON TARGET 936 (SOD)(CHB)(DLF,HYF,IEF,MSUDF,MDF)  
 R LEADER 6964 (SOD)(DLF,HYF,IEF,MSUDF,DBF) 443500058  
 R MISS REVOLUTION 1009 (DOB)(DLF,HYF,IEF,DBF)  
 CMR ILR DOMINO 86P (SOD)(DLF,HYF,IEF)  
 GRANDVIEW CMR 86P GAL Y310 (DLF,HYF,IEF) 443206842  
 STAR P606 LIBERTY GAL 203R ET (DOB)(DLF,HYF,IEF)

SCHU-LAR ON TARGET 22S (SOD)(CHB)(DLF,HYF,IEF,MSUDF,MDF,DBF)  
 HYALITE TS LASS 310 (DLF,HYF,IEF)  
 MSU TCF REVOLUTION 4R (SOD)(DLF,HYF,IEF,MDF,DBF)  
 R MISS WRANGLER 3007  
 CJH LI DOMINO 552 (SOD)(DLF,HYF,IEF)  
 ILR MISS VINDY 32D (DLF,HYF,IEF)  
 PW VICTOR BOOMER P606 (SOD)(DLF,HYF,IEF,MDF)  
 STAR LIBERTY 44E (HYP)

CE	BW	WW	YW	DMI	SC	SCF	MM	M&G	MCE
1.3	2.7	60	89	0.4	0.9	19.1	24	54	0.6
MCW	UDDR	TEAT	CW	FAT	REA	MARB	BMI\$	BIIS	CHBS
75	1.40	1.40	66	0.052	0.43	0.02	373	446	91

• 360 is sired by the popular R Leader, out of our 16-year-old donor cow, Y310, that is still in production, that we purchased from Langley Farms. If you are looking for longevity, growth and red meat, 360 is your guy. 360 ranks in the top 6% for Udder, 11% for Teat. His dam records a progeny ratio of 8 @ 105 for WW and 3 @ 106.3 for YW.

**366 4M MR 9364 LARAMIE 366** {DLF,HYF,IEF,MSUDF}  
 BULL P44430366 || CALVED: 10/27/22 || TATTOO: LE 366 SCURRED

CL 1 DOMINO 215Z {S00}{CHB}{DLF,HYF,IEF,MSUDF,MDF} CL 1 DOMINO 9122W 1ET {CHB}{DLF,HYF,IEF}  
 B&D LI DOMINO 9364 ET {DLF,HYF,IEF,MSUDF,MDF} CL 1 DOMINETTE 055X {D00}{DLF,HYF,IEF}  
 44116860 HH MISS ADVANCE 0041X ET {DLF,HYF,IEF} HH ADVANCE 7034T ET {DLF,HYF,IEF}  
 HH MISS ADVANCE 5139R ET {DLF,HYF,IEF}  
 4M TRUST HARLAND 618 {DLF,HYF,IEF,MSUDF} JBB/AL TRUST 3079ET {DLF,HYF,IEF}  
 4M MISS TRUSTY LARAMIE 969 LJP HARLAND 305 {D00}{DLF,HYF,IEF,MSUDF}  
 P44052087 4M LARAMIE LADY 749ET GKB 88X LARAMIE B293 {DLF,HYF,IEF,MDF,DBF}  
 CMR GRANDVIEW MISS 136N 114S {DLF,HYF,IEF,MSUDF}

CE	BW	WW	YW	DMI	SC	SCF	MM	M&G	MCE
-1.3	3.8	69	104	0.4	1.4	20.9	31	65	-1.5
MCW	UDDR	TEAT	CW	FAT	REA	MARB	BMI\$	BIIS	CHBS
117	1.10	1.10	80	0.002	0.60	0.07	434	518	124

• 366 is sired by 9364 and goes back to the 114S donor cow. His dam, 969, records a progeny ratio of 2 @ 106 for WW and 2 @ 102.5 for YW. 366 is powerful, short marked with good pigment. He ratioed a 108 for WW and 104 for YW being in the top 7% for WW, 17% for YW, 14% for SCF, and 11% for BMI and BI.



4M MR 9364 LARAMIE 366



**370 4M MR 2079 DOMINO 370** {DLF,HYF,IEF,MSUDF}  
 BULL 44431062 || CALVED: 10/30/22 || TATTOO: LE 370 HORNED

/S MANDATE 66589 ET {CHB}{DLF,HYF,IEF,MSUDF,MDF,DBF} R LEADER 6964 {S00}{DLF,HYF,IEF,MSUDF,DBF}  
 4M 66589 DOMINO 2079 ET {DLF,HYF,IEF,MSUDF} /S LADY DOMINO 0158X {DLF,HYF,IEF}  
 44108234 JW Z311 DOMINETTE 1608 ET {DLF,HYF,IEF,MSUDF} KCF BENNETT ENCORE Z311 ET {S00}{CHB}{DLF,HYF,IEF,MSUDF,MDF,DBF}  
 CMR GV 484 MISS 5413 {D00}{DLF,HYF,IEF}  
 CL 1 DOMINO 215Z {S00}{CHB}{DLF,HYF,IEF,MSUDF,MDF} CL 1 DOMINO 9122W 1ET {CHB}{DLF,HYF,IEF}  
 4M MISS COWGIRLS DOMINO 959 {DLF,HYF,IEF,MSUDF} CL 1 DOMINETTE 055X {D00}{DLF,HYF,IEF}  
 44037037 4M MS DOMINO COWGIRL 721 {HYP} DH DOMINO 809  
 JBB/AL COWGIRL 962 {HYP}

CE	BW	WW	YW	DMI	SC	SCF	MM	M&G	MCE
2.3	3.0	70	115	1.0	1.2	23.6	30	65	1.6
MCW	UDDR	TEAT	CW	FAT	REA	MARB	BMI\$	BIIS	CHBS
98	1.10	1.30	81	0.052	0.56	0.22	460	559	126

• 370 is a carbon copy of his sire, 2079. He is powerful, massive bodied, and good looking, also backed with the numbers to prove it! 370 ratioed a 109 for WW and 111 for YW putting him in the top 6% for WW, 4% for YW, 4% for SCF and the top 6% for BMI and BI. His dam records a progeny ratio of 3 @ 106 for WW and 2 @ 106 for YW. His sire, 2079, is putting his mark out there as well with 15 calves ratioing @ 107.5 for WW and 11 @ 106.5 for YW.



4M MR 2079 DOMINO 370



**372 4M MR 322 FORWARD COWBOY 372** {DBP}  
 BULL 44431065 || CALVED: 10/31/22 || TATTOO: LE 372 HORNED

/S MANDATE 66589 ET {CHB}{DLF,HYF,IEF,MSUDF,MDF,DBF} R LEADER 6964 {S00}{DLF,HYF,IEF,MSUDF,DBF}  
 4M LF REDMAN 322 ET {DLF,HYF,IEF,MSUDF,DBP} /S LADY DOMINO 0158X {DLF,HYF,IEF}  
 P44160384 TDP PEANUT 5X {DLF,HYF,IEF,MSUDF,DBP} BKR SANDERSON 73C 60S {DLF,HYF,IEF}  
 TDP PEANUT 404U ET {D00}{DLF,HYF,IEF,DBP}  
 NJW 79Z 33B FORWARD 252F {DLF,HYF,IEF,MSUDF,MDF,DBF} NJW 160Z 10W WHIT 33B {DLF,HYF,IEF,MSUDF,MDF,DBF}  
 4M MS FORWARD COWGIRL 138ET BW 91H 100W RITA 79Z ET {DLF,HYF,IEF,MSUDF,MDF}  
 44245463 JBB/AL COWGIRL 021 {DLF,HYF,IEF,MSUDF} /S COWBOY LOGIC 4668 {DLF,HYF,IEF}  
 JBB/AL MS BENNETT 743 {DLP}

CE	BW	WW	YW	DMI	SC	SCF	MM	M&G	MCE
9.0	-1.0	47	88	0.4	0.8	18.7	23	46	2.4
MCW	UDDR	TEAT	CW	FAT	REA	MARB	BMI\$	BIIS	CHBS
101	1.40	1.40	66	0.052	0.30	0.20	379	451	118

• 372 is stacked on the pedigree side with 66589, 252F, and out of our infamous 021 donor. Sleep at night heifer bull, that's dark red, red eyed and easy keeping. 372 ratioed a 104 for YW. He ranks in the top 6% for Udder and 11% for Teat.



4M MR 322 FORWARD COWBOY 372





4M MR 9364 MR MAYBELL 376



**376 4M MR 9364 MR MAYBELL 376** {DBP}  
 BULL 44431071 || CALVED: 11/1/22 || TATTOO: LE 376 HORNED

CL 1 DOMINO 215Z (S00){CHB}{DLF,HYF,IEF,MSUDF,MDF} CL 1 DOMINO 9122W 1ET (CHB){DLF,HYF,IEF}  
 B&D LI DOMINO 9364 ET (DLF,HYF,IEF,MSUDF,MDF) CL 1 DOMINETTE 055X (D00){DLF,HYF,IEF}  
 44116860 HH MISS ADVANCE 0041X ET (DLF,HYF,IEF) HH ADVANCE 7034T ET (DLF,HYF,IEF)  
 HH MISS ADVANCE 5139R ET (DLF,HYF,IEF)  
 JBB/AL TRUST 3079ET (DLF,HYF,IEF) NJW 73S M326 TRUST 100W ET (S0D){CHB}{DLF,HYF,IEF,MSUDF,MDF}  
 4M TRUST ME MAYBELL 764 (DBP) RPH LADY VICTORIA 10N (DLF,HYF,IEF)  
 P43780459 ABG 0124 ROCKIN TIME 4004 ET (DBP) RST TIMES A WASTIN 0124 (S0D){DLF,HYF,IEF}  
 S-W ROCKIN AWE BABY 943Z ET (DLF,HYF,IEF,DBP)

CE	BW	WW	YW	DMI	SC	SCF	MM	M&G	MCE
8.2	1.9	60	98	0.4	1.1	17.3	23	53	6.7
MCW	UDDR	TEAT	CW	FAT	REA	MARB	BMI\$	BIIS	CHBS
102	1.20	1.30	71	0.012	0.38	0.06	362	437	113

• 376 is another 9364 son, whose dam is proving donor worthy. His dam has ratioed 4 @ 104.5 for WW and 3 @ 106.3 for YW. 376 is a heifer bull that is rugged, stout and built for the long haul. 376 ratioed a 101 for WW and 105 for YW.



4M MR 9364 CASH FLO 377



**377 4M MR 9364 CASH FLO 377**  
 BULL 44431072 || CALVED: 11/2/22 || TATTOO: LE 377 HORNED

CL 1 DOMINO 215Z (S00){CHB}{DLF,HYF,IEF,MSUDF,MDF} CL 1 DOMINO 9122W 1ET (CHB){DLF,HYF,IEF}  
 B&D LI DOMINO 9364 ET (DLF,HYF,IEF,MSUDF,MDF) CL 1 DOMINETTE 055X (D00){DLF,HYF,IEF}  
 44116860 HH MISS ADVANCE 0041X ET (DLF,HYF,IEF) HH ADVANCE 7034T ET (DLF,HYF,IEF)  
 HH MISS ADVANCE 5139R ET (DLF,HYF,IEF)  
 DKF RO CASH FLOW 0245 ET (S0D){DLF,HYF,IEF} CRR ABOUT TIME 743 (S0D){DLF,HYF,IEF,MDF}  
 4M MS CASH FLO DOMINO 8113ET (DLF,HYF,IEF,MSUDF) JRR MISS TOBEY 711T (DLF,HYF,IEF)  
 P43938055 FOUR L 3027 MISS Y0041 (DLF,HYF,IEF) UPS DOMINO 3027 (S0D){CHB}{DLF,HYF,IEF,MSUDF,MDF}  
 FOUR L 285M MISS 6183S

CE	BW	WW	YW	DMI	SC	SCF	MM	M&G	MCE
7.2	1.1	54	77	0.1	1.1	27.2	37	64	4.7
MCW	UDDR	TEAT	CW	FAT	REA	MARB	BMI\$	BIIS	CHBS
71	1.20	1.30	73	0.032	0.42	0.14	515	595	120

• 377 is a sleep all night heifer bull. If you can't tell yet, these 9364 sons are impressive. This bull is truly hard to put a hole in. He is in the top 1% for SCF, 5% Milk, and 1% BMI and BI.



4M MR 2079 SENSATION 382



**382 4M MR 2079 SENSATION 382** {DBP}  
 BULL 44431079 || CALVED: 11/4/22 || TATTOO: LE 382 HORNED

/S MANDATE 66589 ET (CHB){DLF,HYF,IEF,MSUDF,MDF,DBP} R LEADER 6964 (S0D){DLF,HYF,IEF,MSUDF,DBP}  
 4M 66589 DOMINO 2079 ET (DLF,HYF,IEF,MSUDF) /S LADY DOMINO 0158X (DLF,HYF,IEF)  
 44108234 JW Z311 DOMINETTE 1608 ET (DLF,HYF,IEF,MSUDF) KCF BENNETT ENCORE Z311 ET (S0D){CHB}{DLF,HYF,IEF,MSUDF,MDF,DBP}  
 CMR GV 484 MISS 5413 (D00){DLF,HYF,IEF}  
 ECR SENSATION 19-254 (DLF,HYF,IEF,MSUDF,DBP) CHURCHILL SENSATION 028X (S0D){DLF,HYF,IEF,MDF,DBP}  
 4M MISS TRUSTY SENSATION 970 (DBP) ECR MISS ELLA MICHELLE 24-214 (DLF,HYF,DBP)  
 P44060351 4M MISS TRUSTY UNNA 742ET NJW 73S M326 TRUST 100W ET (S0D){CHB}{DLF,HYF,IEF,MSUDF,MDF}  
 KE UNNA 8072 P606 ET (DLF,HYF,IEF)

CE	BW	WW	YW	DMI	SC	SCF	MM	M&G	MCE
3.0	2.7	66	107	0.8	1.4	19.1	29	62	2.6
MCW	UDDR	TEAT	CW	FAT	REA	MARB	BMI\$	BIIS	CHBS
103	1.30	1.30	71	0.052	0.36	0.23	387	480	116

• 382 is an impressive 2079 son. Dark red, red eyes, red to the ground, sound and stout, an exact replica of his sire. His pedigree is backed by more known sires of 254 and 100W. 382 ratioed a 106 for WW, 109 for YW, putting him in the top 14% for WW, 11% for YW and 13% SC. His dam also records a progeny ratio of 2 @103 for WW.

### 384 4M MR 9364 TRUST 384

BULL P44431081 || CALVED: 11/7/22 || TATTOO: LE 384 SCURRED

B&D L1 DOMINO 9364 ET (DLE,HYF,IEF,MSUDF,MDF) 44116860  
 CL 1 DOMINO 215Z (SOD)(CHB)(DLE,HYF,IEF,MSUDF,MDF)  
 HH MISS ADVANCE 0041X ET (DLE,HYF,IEF)  
 NIW 73S M326 TRUST 100W ET (SOD)(CHB)(DLE,HYF,IEF,MSUDF,MDF)  
 4M MS TRUST UNNA 735 ET P43786393  
 KE UNNA 8072 P606 ET (DLE,HYF,IEF)  
 CL 1 DOMINO 9122W 1ET (CHB)(DLE,HYF,IEF)  
 CL 1 DOMINETTE 055X (SOD)(DLE,HYF,IEF)  
 HH ADVANCE 7034T ET (DLE,HYF,IEF)  
 HH MISS ADVANCE 5139R ET (DLE,HYF,IEF)  
 KCF BENNETT 3008 M326 (SOD)(CHB)(DLE,HYF,IEF,MSUDF,MDF)  
 NIW P606 72N DAYDREAM 73S (DLE,HYF,IEF,MSUDF,MDF)  
 PW VICTOR BOOMER P606 (SOD)(DLE,HYF,IEF,MDF)  
 BTF 5015 9146 (DLE,HYF,IEF)

CE	BW	WW	YW	DMI	SC	SCF	MM	M&G	MCE
8.8	-0.2	50	76	0.1	1.2	23.0	29	54	6.2
MCW	UDDR	TEAT	CW	FAT	REA	MARB	BMI\$	BIIS	CHBS
96	1.30	1.30	71	0.032	0.42	0.22	459	538	128

• 384 is a big-time heifer bull that is still packed with power and some impressive genetics. He ranks in the top 6% for BMI and BI. His dam, a 100W daughter, ratioed 4 @ 105.5 for WW and 4 @ 101 for YW.



4M MR 9364 TRUST 384



### 388 4M MR 9364 ADVANCE 388 (IEP)

BULL 44431085 || CALVED: 11/13/22 || TATTOO: LE 388 HORNED

B&D L1 DOMINO 9364 ET (DLE,HYF,IEF,MSUDF,MDF) 44116860  
 CL 1 DOMINO 215Z (SOD)(CHB)(DLE,HYF,IEF,MSUDF,MDF)  
 HH MISS ADVANCE 0041X ET (DLE,HYF,IEF)  
 FOUR L 8015 HARLAND TOO B4012 (DLE,HYF,IEF)  
 4M MS HARLEYS ADVANCE 853 (IEP) 43905469  
 SF L1 DOMINETTE 0010 (IEP)  
 CL 1 DOMINO 9122W 1ET (CHB)(DLE,HYF,IEF)  
 CL 1 DOMINETTE 055X (SOD)(DLE,HYF,IEF)  
 HH ADVANCE 7034T ET (DLE,HYF,IEF)  
 HH MISS ADVANCE 5139R ET (DLE,HYF,IEF)  
 C HARLAND TOO ET (SOD)(DLE,HYF,IEF)  
 FOUR L 955W RED LADY Y0038 (DLE,HYF,IEF)  
 HH ADVANCE 7115T  
 WJ DOMINETTE 8002 (IEP)

CE	BW	WW	YW	DMI	SC	SCF	MM	M&G	MCE
8.7	1.4	53	75	0.1	0.9	21.5	28	54	6.4
MCW	UDDR	TEAT	CW	FAT	REA	MARB	BMI\$	BIIS	CHBS
81	1.20	1.30	70	0.032	0.34	0.12	427	501	114

• 388 is a heifer bull. Another 9364 son who has a sound genetic background in his pedigree. He ranks in the top 12% for SCF, 14% for BMI and 18% for BI. His dam ratioed 3 @ 103 for WW.



4M MR 9364 ADVANCE 388



### 393 4M MR 88483 SENSATION 393

BULL 44431089 || CALVED: 11/18/22 || TATTOO: LE 393 HORNED

/S INTEGRITY 55498 ET (DLE,HYF,IEF,MSUDF,MDF) P44017588  
 /S INTEGRITY 88483 ET (DLE,HYF,IEF,MSUDF,MDF)  
 /S LADY RED BULL 5228C (DLE,HYF,IEF,MSUDF)  
 CHURCHILL SENSATION 028X (SOD)(DLE,HYF,IEF,MDF,DBF)  
 4M MS SENSATIONS LADY 785 ET 43784275  
 JBB/AL COWGIRL 021 (DLE,HYF,IEF,MSUDF)  
 NIW 73S W18 HOMETOWN 10Y ET (SOD)(CHB)(DLE,HYF,IEF,MSUDF,MDF)  
 /S LADY DOMINO 652S (DLE,IEF)  
 SCHU-LAR RED BULL 18X (SOD)(DLE,HYF,IEF)  
 /S LADY ADVANCE 7291T (DLE,HYF,IEF)  
 UPS DOMINO 3027 (SOD)(CHB)(DLE,HYF,IEF,MSUDF,MDF)  
 CHURCHILL LADY 7202T ET (DLE,HYF,IEF)  
 /S COWBOY LOGIC 4668 (DLE,HYF,IEF)  
 JBB/AL MS BENNETT 743 (DLP)

CE	BW	WW	YW	DMI	SC	SCF	MM	M&G	MCE
5.7	1.0	51	83	0.1	1.2	21.1	27	53	2.1
MCW	UDDR	TEAT	CW	FAT	REA	MARB	BMI\$	BIIS	CHBS
67	1.30	1.40	68	0.052	0.35	0.11	414	486	112

• 393 is a heifer bull. He is the only 88483 son in this offering, and his half-brothers were well received at our last sale. He also goes back to the well-known 021 donor. 393 is easy keeping, who is robust in his shape and design. He ranks in the top 13% for SCF, 15% BW, 20% for Udder and 11% for Teat. He will sire the kind you want to keep.



4M MR 88483 SENSATION 393





4M MR 322 PERFCT MAN 394



**394 4M MR 322 PERFCT MAN 394** {DBP}  
 BULL 44431092 || CALVED: 11/20/22 || TATTOO: LE 394 HORNED

/S MANDATE 66589 ET {CHB}{DLE,HVY,IEF,MSUDF,MDF,DBF} R LEADER 6964 {SOD}{DLE,HVY,IEF,MSUDF,DBF}  
 4M LF REDMAN 322 ET {DLE,HVY,IEF,MSUDF,DBP} /S LADY DOMINO 0158X {DLE,HVY,IEF}  
 P44160384 TDP PEANUT 5X {DLE,HVY,IEF,MSUDF,DBP} BKR SANDERSON 73C 60S {DLE,HVY,IEF}  
 BG LCC 11B PERFECTO 84F {DLE,HVY,IEF,MSUDF,MDF,DBF} LCX PERFECTO 11B ET {DLE,HVY,IEF,MSUDF}  
 4M MS SENSATION PERFECTO 117 {DBP} BG 100W NICKY 31C {SOD}{DLE,HVY,IEF,MSUDF,MDF}  
 P44279597 WF 2296 BELLE 1630 2014 {DBP} UPS SENSATION 2296 ET {SOD}{DLE,HVY,IEF,MSUDF,MDF,DBC}  
 WF 485T BELLE 505 1630 ET

CE	BW	WW	YW	DMI	SC	SCF	MM	M&G	MCE
2.9	2.2	59	102	0.3	0.8	22.1	28	58	1.8
MCW	UDDR	TEAT	CW	FAT	REA	MARB	BMI\$	BIIS	CHBS
107	1.40	1.40	72	0.082	0.48	0.06	434	511	111

• 394 is what a horned bull should look like. This complete 66589 grandson is also backed by some powerful genetics. He ranks in the top 20% for YW, 8% SCF, 7% Udder, 11% Teat, 11% BMI and 14% BI.



4M MR 9364 RIB EYE 397



**397 4M MR 9364 RIB EYE 397**  
 BULL P44431096 || CALVED: 11/21/22 || TATTOO: LE 397 SCURRED

CL 1 DOMINO 215Z {SOD}{CHB}{DLE,HVY,IEF,MSUDF,MDF} CL 1 DOMINO 9122W 1ET {CHB}{DLE,HVY,IEF}  
 B&D LI DOMINO 9364 ET {DLE,HVY,IEF,MSUDF,MDF} CL 1 DOMINETTE 055X {SOD}{DLE,HVY,IEF}  
 44116860 HH MISS ADVANCE 0041X ET {DLE,HVY,IEF} HH ADVANCE 7034T ET {DLE,HVY,IEF}  
 FOUR L 8015 HARLAND TOO B401Z {DLE,HVY,IEF} C HARLAND TOO ET {SOD}{DLE,HVY,IEF}  
 4M MS RIB EYES HARLEY 83Z FOUR L 955W RED LADY Y0038 {DLE,HVY,IEF}  
 P43885695 JBB MS RIB EYE 988F SHF RIB EYE M326 R117 {SOD}{CHB}{DLE,HVY,IEF}  
 JBB MS ENDURANCE 583

CE	BW	WW	YW	DMI	SC	SCF	MM	M&G	MCE
7.1	2.3	56	86	0.1	1.1	21.4	26	54	4.8
MCW	UDDR	TEAT	CW	FAT	REA	MARB	BMI\$	BIIS	CHBS
82	1.30	1.30	69	0.022	0.34	0.15	428	506	120

• 397 is a heifer bull whose numbers speak for themselves. He is in the top 20% for CED, 13% for SCF, 14% BMI and 16% BI. Because of the older, proven genetics we think he would cross great on a commercial herd.



4M MR 9364 DENVERS MONEY 3100



**3100 4M MR 9364 DENVERS MONEY 3100**  
 BULL P44431100 || CALVED: 11/24/22 || TATTOO: LE 3100 SCURRED

CL 1 DOMINO 215Z {SOD}{CHB}{DLE,HVY,IEF,MSUDF,MDF} CL 1 DOMINO 9122W 1ET {CHB}{DLE,HVY,IEF}  
 B&D LI DOMINO 9364 ET {DLE,HVY,IEF,MSUDF,MDF} CL 1 DOMINETTE 055X {SOD}{DLE,HVY,IEF}  
 44116860 HH MISS ADVANCE 0041X ET {DLE,HVY,IEF} HH ADVANCE 7034T ET {DLE,HVY,IEF}  
 CLD MR SENSATION 704 {DLE,HVY,IEF} HH MISS ADVANCE 5139R ET {DLE,HVY,IEF}  
 4M MISS DENVERS MONEY 990 {DLE,HVY,IEF,MSUDF} UPS SENSATION 2504 ET {SOD}{DLE,HVY,IEF,MSUDF,MDF}  
 P44037047 4M MS MONEY ADVANCE 7141 {HYP} SSF 782 LADY SHREK 037 {HYP}  
 4M TIME IS MONEY 430 {DLE,HVY,IEF}  
 JP ADVANCE 147 {HYP}

CE	BW	WW	YW	DMI	SC	SCF	MM	M&G	MCE
-1.6	3.9	56	87	0.2	0.7	24.2	29	57	1.3
MCW	UDDR	TEAT	CW	FAT	REA	MARB	BMI\$	BIIS	CHBS
61	1.30	1.40	72	0.012	0.37	0.04	462	535	111

• 3100 is intriguing. Rugged, cowboy kind of bull, big ribbed and built to cover your herd. 3100 ratioed a 101 for WW and 106 for YW, putting him in the top 3% for SCF, 20% Udder, 11% Teat, 6% BMI and 3% BI. His dam also records a progeny ratio of 2 @ 102 for WW and 2 @ 102 for YW.

**3103 4M MR 322 RED COWBOY 3103** {DBP}  
 BULL 44432699 || CALVED: 11/27/22 || TATTOO: LE 3103 HORNED

/S MANDATE 66589 ET {CHB}{DLF,HVF,IEF,MSUDF,MDF,DBF} R LEADER 6964 {SDD}{DLF,HVF,IEF,MSUDF,DBF}  
 4M LF REDMAN 322 ET {DLF,HVF,IEF,MSUDF,DBF} /S LADY DOMINO 0158X {DLF,HVF,IEF}  
 P44160384 TDP PEANUT 5X {DLF,HVF,IEF,MSUDF,DBF} BKR SANDERSON 73C 60S {DLF,HVF,IEF}  
 TDP PEANUT 404U ET {DOD}{DLF,HVF,IEF,DBP}  
 NJW 79Z 33B FORWARD 252F {DLF,HVF,IEF,MSUDF,MDF,DBF} NJW 160Z 10W WHIT 33B {DLF,HVF,IEF,MSUDF,MDF,DBF}  
 4M MS FORWARD COWGIRL 146ET BW 91H 100W RITA 79Z ET {DLF,HVF,IEF,MSUDF,MDF}  
 44245471 JBB/AL COWGIRL 021 {DLF,HVF,IEF,MSUDF} /S COWBOY LOGIC 4668 {DLF,HVF,IEF}  
 JBB/AL MS BENNETT 743 {DLF}

CE	BW	WW	YW	DMI	SC	SCF	MM	M&G	MCE
4.2	1.6	56	96	0.5	0.9	18.7	24	52	0.6
MCW	UDDR	TEAT	CW	FAT	REA	MARB	BMI\$	BIIS	CHBS
101	1.40	1.40	70	0.042	0.36	0.14	380	457	114

• 3103 is one of the last 322 sons in this offering. He is backed by 252F and 021 genetics. He is a heifer bull that is growthy and high performing. He ratioed a 104 for WW and 108 for YW. He ranks in the top 6% in Udder and 11% for Teat if you are needing to improve that in your herd.



4M MR 322 RED COWBOY 3103



**3104 4M MR 2079 JC DOMINO 3104**  
 BULL 44432700 || CALVED: 11/29/22 || TATTOO: LE 3104 HORNED

/S MANDATE 66589 ET {CHB}{DLF,HVF,IEF,MSUDF,MDF,DBF} R LEADER 6964 {SDD}{DLF,HVF,IEF,MSUDF,DBF}  
 4M 66589 DOMINO 2079 ET {DLF,HVF,IEF,MSUDF} /S LADY DOMINO 0158X {DLF,HVF,IEF}  
 44108234 JW Z311 DOMINETTE 1608 ET {DLF,HVF,IEF,MSUDF} KCF BENNETT ENCORE Z311 ET {SDD}{CHB}{DLF,HVF,IEF,MSUDF,MDF,DBF}  
 CMR GV 484 MISS 5413 {DOD}{DLF,HVF,IEF}  
 CHURCHILL ADVANCE 4345B {DLF,HVF,IEF,MSUDF} HH ADVANCE 0132X {SDD}{DLF,HVF,IEF}  
 JC LI LADY 4345B 909G {DLF,HVF,IEF,MSUDF} CHURCHILL LADY 8117U {DLF,HVF,IEF}  
 44108907 PARKERS MS LI DOMINO 904 {DLF,HVF,IEF} HH ADVANCE 286M 1ET {SDD}{DLF,IEF}  
 PARKERS MS LI DOMINO 706 {DLF,HVF,IEF}

CE	BW	WW	YW	DMI	SC	SCF	MM	M&G	MCE
-0.1	4.6	69	112	0.9	1.2	16.5	23	58	-1.0
MCW	UDDR	TEAT	CW	FAT	REA	MARB	BMI\$	BIIS	CHBS
93	1.30	1.40	75	0.052	0.29	0.19	344	436	115

• 3104 is a cherry red, goggled eyed horned bull. This 2079 son is short marked, genuine in his shape and design and fast growing! He ratioed a 103 for WW and 107 for YW, putting him in the top 7% for WW and YW.



4M MR 2079 JC DOMINO 3104



**3105 4M MR 9364 DOMINO 3105** {HYP}  
 BULL 44432701 || CALVED: 12/1/22 || TATTOO: LE 3105 HORNED

CL 1 DOMINO 215Z {SDD}{CHB}{DLF,HVF,IEF,MSUDF,MDF} CL 1 DOMINO 9122W 1ET {CHB}{DLF,HVF,IEF}  
 B&D LI DOMINO 9364 ET {DLF,HVF,IEF,MSUDF,MDF} CL 1 DOMINETTE 055X {DOD}{DLF,HVF,IEF}  
 44116860 HH MISS ADVANCE 0041X ET {DLF,HVF,IEF} HH ADVANCE 7034T ET {DLF,HVF,IEF}  
 HH MISS ADVANCE 5139R ET {DLF,HVF,IEF}  
 FOUR L 8015 HARLAND TOO B401Z {DLF,HVF,IEF} C HARLAND TOO ET {SDD}{DLF,HVF,IEF}  
 4M HARLANDS DOMINETTE 846 {HYP} FOUR L 955W RED LADY Y0038 {DLF,HVF,IEF}  
 43905442 4M UPS ULTRA 433 {HYP} AL 3027 DOMINO 122 {DLF,HVF,IEF}  
 JP ADVANCE 152 {HYP}

CE	BW	WW	YW	DMI	SC	SCF	MM	M&G	MCE
6.0	2.2	55	82	0.1	0.9	23.6	29	56	5.2
MCW	UDDR	TEAT	CW	FAT	REA	MARB	BMI\$	BIIS	CHBS
83	1.20	1.30	71	0.022	0.35	0.13	460	538	118

• 3105 is a heifer bull who is sired by 9364. He is one of the last 9364 sons to be offered in this sale. 3105 is a solid made horned bull who is hard to pick a hole in. If you are needing longevity, he ranks in the top 4% for SCF, 5% BMI and 7% BI.



4M MR 9364 DOMINO 3105





4M MR 2079 HOMETOWN GUY 3107



**3107 4M MR 2079 HOMETOWN GUY 3107** (DLF,HYF,IEF,MSUDF,MDP,DBP)  
 BULL 44432703 || CALVED: 12/12/22 || TATTOO: LE 3107 HORNED

/S MANDATE 66589 ET (CHB) (DLF,HYF,IEF,MSUDF,MDP,DBP) R LEADER 6964 (S00) (DLF,HYF,IEF,MSUDF,DBF)  
 4M 66589 DOMINO 2079 ET (DLF,HYF,IEF,MSUDF) /S LADY DOMINO 0158X (DLF,HYF,IEF)  
 44108234 JW Z311 DOMINETTE 1608 ET (DLF,HYF,IEF,MSUDF) KCF BENNETT ENCORE Z311 ET (S00) (CHB) (DLF,HYF,IEF,MSUDF,MDP,DBF)  
 CMR GV 484 MISS 5413 (D00) (DLF,HYF,IEF)  
 NJW 73S W18 HOMETOWN 10Y ET (S00) (CHB) (DLF,HYF,IEF,MSUDF,MDP) SHF WONDER M326 W18 ET (S00) (CHB) (DLF,HYF,IEF,MSUDF,MDP)  
 4M MISS HOME GIRLS LADY 941ET (MDP,DBP) NJW P606 72N DAYDREAM 73S (DLF,HYF,IEF,MSUDF,MDP)  
 P44036954 JBB MS VICTOR 294 (D00) (DLF,HYF,IEF,MSUDF,DBP) TH 122 71 VICTOR 719T (S00) (DLF,HYF,IEF,MSUDF,MDP)  
 JBB MS PROGRESSOR 080 (HYF,IEF,DBP)

CE	BW	WW	YW	DMI	SC	SCF	MM	M&G	MCE
12.4	-0.8	58	92	0.9	0.8	22.9	27	56	2.2
MCW	UDDR	TEAT	CW	FAT	REA	MARB	BMI\$	BIIS	CHBS
82	1.30	1.30	69	0.072	0.47	0.28	434	525	112

• 3107 may be the youngest bull, but don't count him out. This 2079 son goes back to a 10Y/294 daughter. He is a heifer bull, who is also big bodied, robust in his shape and sound. He ranks in the top 7% for SCF, 15% for BMI and BI. His dam also records a progeny ratio of 2 @ 101 for YW.



RM MR CHARLO MOUNTAIN 3X1

**3X1 4M MR CHARLO MOUNTAIN 3X1**  
 BLACK ANGUS BULL 20633659 || CALVED: 11/29/22 || TATTOO: 3X1

COLEMAN CHARLO 0256 OCC PAXTON 730P  
 12 STAR CHARLO 003 BOHI ABIGALE 6014  
 20079791 12 STAR BLACKBIRD Z82 ELLINGSON SCOTSMAN 0010  
 EA BLACKBIRD 0013  
 4M HI FLYER BLASTER 701A BRUNS BLASTER  
 4M MS BLASTER LADY 0X1 4M EXTRA MYTTY FRED 301  
 19778279 4M MS IRON FORESIGHT 60X1 LIMESTONE MOUNTIAN Y672  
 S/F FORESIGHT QUEENIE 80X1

CED	BW	WW	YW	DMI	SC	MILK	DOC
8	0.6	59	104	NA	NA	38	NA
CW	MARB	RE	FAT	SM	SW	SF	SB
NA	NA	NA	NA	NA	56	76	NA

• Heifer bull. 3X1 is rugged and stout with tons of longevity on the bottom side of his pedigree. Half brother to Lots 330, 394 and 350.



RM MR CHARLO BLASTER 330

**330 4M MR CHARLO BLASTER 330**  
 BLACK ANGUS BULL 20633663 || CALVED: 11/23 || TATTOO: 330

COLEMAN CHARLO 0256 OCC PAXTON 730P  
 12 STAR CHARLO 003 BOHI ABIGALE 6014  
 20079791 12 STAR BLACKBIRD Z82 ELLINGSON SCOTSMAN 0010  
 EA BLACKBIRD 0013  
 4M HI FLYER BLASTER 701A BRUNS BLASTER  
 4M MS MONOGRAM BLASTER 030 4M EXTRA MYTTY FRED 301  
 19778286 MONOGRAM BETTY 305 MONOGRAM CONSENSUS 9363  
 MONOGRAM BETTY 5837

CED	BW	WW	YW	DMI	SC	MILK	DOC
3	2.6	63	109	NA	NA	30	NA
CW	MARB	RE	FAT	SM	SW	SF	SB
NA	NA	NA	NA	NA	56	NA	NA

• 330 is a very easy keeping kind of bull. His YW growth numbers are impressive. Half brother to Lots 3X1, 394 and 350.



**394 4M MR IMPRESSIVE CHARLO 394**  
 BLACK ANGUS BULL 20636287 || CALVED: 12/22/22 || TATTOO: 394

12 STAR CHARLO 003  
 20079791

COLEMAN CHARLO 0256  
 12 STAR BLACKBIRD Z82

4M MS BLASTERS LADY 094  
 19778296

OCC PAXTON 730P  
 BOHI ABIGALE 6014  
 ELLINGSON SCOTSMAN 0010  
 EA BLACKBIRD 0013

BRUNS BLASTER  
 4M EXTRA MYTTY FRED 301  
 4M IMPRESSED BY PHYLISS 415  
 WP FOCUS RAVEN 1493

CED	BW	WW	YW	DMI	SC	MILK	DOC
2	3.5	61	109	NA	NA	29	NA
CW	MARB	RE	FAT	SM	\$W	SF	SB
NA	NA	NA	NA	NA	50	NA	NA

• 394 is a deep, stout, rugged made bull. He has an impressive spread with lots of growth. He will add the pounds to your calves. Half brother to Lots 3X1, 330 and 350.



4M MR IMPRESSIVE CHARLO 394

**350 350**  
 BLACK ANGUS BULL UNREGISTERED || CALVED: || TATTOO: 350

12 STAR CHARLO 003  
 20079791

COLEMAN CHARLO 0256  
 12 STAR BLACKBIRD Z82

OCC PAXTON 730P  
 BOHI ABIGALE 6014  
 ELLINGSON SCOTSMAN 0010  
 EA BLACKBIRD 0013

COMMERCIAL DAM

• 350 is a Purebred bull sired by 12 Star Charlo 003 and out of a very good dam stemming back to BC Matrix 4132, Summitcrest Hi Flyer 3818, Basin Payweight 1682 and GDAR Gameday 449. His offspring will be heavy and productive. Half brother to Lots 3X1, 330 and 394.



350

**32E MG4M RED BANDERA 32E**  
 RED ANGUS BULL 4867450 || CALVED: 10/12/22 || TATTOO: 32E

TWT BANDERA 639  
 3540401

WPRA LEGACY A-314  
 RED SSS JESSIE 261Z

RED NCJ SCYTHIA 22E  
 3897271

RED LAZY MC SPLASH 14T  
 RED LAZY MC SCYTHIA 78N

RED LAZY MC EYE SPY 64Y  
 WPRA EVERLEDA ENTENSE 610  
 RED SSS SOLDIER 365W  
 RED SSS JESSIE 654X

RED LAZY MC SMASH 41N  
 LAZY MC BESS 4K  
 RED LAZY MC THIRTY X 22L  
 RED RRD SCYNTHIA 16H

CED	BW	WW	YW	DMI	MILK	HPG	CEM
12	-1.6	53	80	1.27	24	9	6
STAY	MARB	REA	FAT	PROS	HB	GM	
10	0.23	-0.1	0.01	32	24	8	

• 32E is extremely expressive in his design. He is packed with longevity in his pedigree. He will cross well on any set of cattle.



MG4M RED BANDERA 32E

## COMMERCIAL LOTS

### B BALDY PAIRS

Tags 1-31 (calves tagged with corresponding number)

26- to 28-month-old F1 Black Baldy, Hereford/Angus. Calves are sired by Black & Red Angus Bulls. Calves born from October 15-December 15, 2023. Cows are exposed back to a Brangus bull starting January 1, 2024. Cows were last worked on December 16, 2023 with Virashield 6VL5HB and dewormed with Dectomax injectable. Calves were worked with Presponse HM, Inforce 3, Vision 8, Triangle 5 and dewormed Dectomax injectable.



MG-4M BWF PAIRS

### C BRAFORD HEIFERS

14- to 16-month-old heifers. Exposed to low-birth-weight Angus bull starting December 28, 2023. Vaccinated on December 1, 2023 with Virashield 6VL5HB and dewormed with Dectomax injectable.



MG-4M BRAFORDS

### D BLACK F1 HEIFERS

14- to 16-month-old heifers. Exposed to low-birth-weight Angus bull starting December 28, 2023. Vaccinated on December 1, 2023 with Virashield 6VL5HB and dewormed with Dectomax injectable.



MG-4M BLACK F1 HEIFERS

## Understanding Hereford EPDs

The American Hereford Association (AHA) currently produces expected progeny differences (EPDs) for 17 traits and calculates three profit indexes. AHA's genetic evaluation makes use of a Marker Effects Model that allows the calculation of EPDs by incorporating the pedigree, phenotypic and genomic profile of an animal. Animals that have a genomic profile will be denoted with a GE-EPD logo.

The current suite of Hereford EPDs and profit indexes includes:

### Calving Ease — Direct (CE)

CE EPD is based on calving ease scores and birth weights and is measured on a percentage. CE EPD indicates the influence of the sire on calving ease in females calving at 2 years of age. For example, if sire A has a CE EPD of 6 and sire B has a CE EPD of -2, then you would expect on average, if comparably mated, sire A's calves would have an 8 percent more likely chance of unassisted calving when compared to sire B's calves.

### Birth Weight (BW)

BW EPD is an indicator trait for calving ease and is measured in pounds. For example, if sire A has a BW EPD of 3.6 and sire B has a BW EPD of 0.6, then you would expect on average, if comparably mated, sire A's calves would come 3 lb. heavier at birth when compared to sire B's calves. Larger BW EPDs usually, but not always, indicate more calving difficulty. The figure in parentheses found after each EPD is an accuracy value or reliability of the EPD.

### Weaning Weight (WW)

WW EPD is an estimate of pre-weaning growth that is measured in pounds. For example, if sire A has a WW EPD of 60 and sire B has a WW EPD of 40, then you would expect on average if comparably mated, sire A's calves would weigh 20 lb. heavier at weaning when compared to sire B's calves.

### Yearling Weight (YW)

YW EPD is an estimate of post-weaning growth that is measured in pounds. For example, if sire A has a YW EPD of 100 and sire B has a YW EPD of 70, then you would expect on average if comparably mated, sire A's calves would weigh 30 lb. heavier at a year of age when compared to sire B's calves.

### Dry Matter Intake (DMI)

The DMI EPD predicts the daily consumption of pounds of feed. For example, if sire A has a DMI EPD of 1.1 and sire B has a DMI EPD of 0.1, you would expect sire B's progeny, if comparably mated, to consume on average 1 pound of feed less per day.

### Scrotal Circumference (SC)

Measured in centimeters and adjusted to 365 days of age, SC EPD is the best estimate of fertility. It is related to the bull's own semen quantity and quality, and is also associated with age at puberty of sons and daughters. Larger SC EPDs suggest younger age at puberty. Yearling sons of a sire with a 0.7 SC EPD should have yearling scrotal circumference measurements that average 0.7 centimeters (cm) larger than progeny by a bull with an EPD of 0.0 cm.

### Sustained Cow Fertility

The AHA's new SCF EPD is a prediction of a cow's ability to continue to calve from three years of age through 12 years of age, given she calved as a two-year-old. The EPD is expressed as a deviation in the proportion of the 10 possible calvings to 12 years old expressed as a probability. For example, the daughters of a bull with a 30 EPD would have the genetic potential to have one more calf by age 12 than the daughters from a bull with a 20 EPD. In other words, the daughters from the 30 EPD bull would have a 10% greater probability of having one more calf than the bull with a 20 EPD. This is equivalent to saying that the daughters are 10% more likely to remain in the herd to age 12.

### Maternal Milk (MM)

The MM EPD of a sire's daughters is expressed in pounds of calf weaned. It predicts the difference in average weaning weights of sires' daughters' progeny due to milking ability. Daughters of the sire with a +14 MM EPD should produce progeny with 205-day weights averaging 24 lb. more (as a result of greater milk production) than daughters of a bull with a MM EPD of -10 lb. (14 minus -10.0 = 24 lb.). This difference in weaning weight is due to total milk production during the entire lactation.

### Maternal Milk & Growth (M&G)

The M&G EPD reflects what the sire is expected to transmit to his daughters for a combination of growth genetics through weaning and genetics for milking ability. It is an estimate of the daughter's progeny weaning weight. A bull with a 29 lb. M&G EPD should sire daughters with progeny weaning weights averaging 19 lb. heavier than progeny of a bull's daughters with a M&G EPD of 10 lb. (29 minus 10 = 19 lb.). It is equal to one-half the sire's weaning weight EPD, plus all of his MM EPD. No accuracy is associated with this since it is simply a mathematical combination of two other EPDs. It is sometimes referred to as "total maternal" or "combined maternal."

### Maternal Calving Ease (MCE)

MCE EPD predicts how easily a sire's daughters will calve at two years of age and is measured on a percentage. For example, if sire A has a MCE EPD of 7 and sire B has a CE EPD of -3, then you would expect on average if comparably mated, sire A's daughters would calve with a 10% more likely chance of being unassisted when compared to sire B's daughters.

### Mature Cow Weight (MCW)

The MCW EPD was designed to help breeders select sires that will either increase or decrease mature size of cows in the herd. The trait was developed after years of cow weight data collection and the EPD relates directly to the maintenance requirements of a cow herd. For example, if sire A has a MCW EPD of 100 and sire B has an EPD of 85, then you would expect the females of sire A, if comparably mated, to be 15 lb. heavier at mature size.

### Udder suspension (UDDR)

UDDR EPDs are reported on a 9 (very tight) to 1 (very pendulous) scoring scale. Differences in sire EPDs predict the difference expected in the sires' daughters' udder characteristics when managed in the same environment.

For example, if sire A has a UDDR EPD of 0.4, and sire B has a UDDR EPD of -0.1, the difference in the values is 0.5, or one-half of a score. If daughters of sires A and B are raised and managed in the same environment, you would expect half a score better udder suspension in daughters of sire A, compared to sire B.

### Teat size (TEAT)

TEAT EPDs are reported on a 9 (very small) to 1 (very large, balloon shaped) scoring scale. Differences in sire EPDs predict the difference expected in the sires' daughters' udder characteristics when managed in the same environment.

For example, if sire A has a teat size EPD of 0.4, and sire B has a teat size EPD of -0.1, the difference in the values is 0.5, or one-half of a score. If daughters of sires A and B are raised and managed in the same environment, you would expect half a score smaller teat size in daughters of sire A, compared to sire B.

### Carcass Weight (CW)

CW EPD is a beneficial trait when considering the impact that pounds have relative to end product value. At the same age constant endpoint, sires with higher values for carcass weight will add more pounds of hot carcass weight compared to sires with lower values for carcass weight. For example, if sire A has a CW EPD of 84 and sire B has a CW EPD 64, then you would expect the progeny of sire A, if harvested at the same age constant endpoint, to have a 20-lb. advantage in terms of hot carcass weight.

### Rib Fat (FAT)

The FAT EPD reflects differences in adjusted 365-day, 12th-rib fat thickness based on carcass measurements of harvested cattle. Sires with low, or negative FAT EPDs, are expected to produce leaner progeny than sires with higher EPDs. Ultrasound measures are also incorporated into this trait and have been shown to be highly correlated with the performance of slaughter progeny. All data is expressed on a carcass scale.

### Ribeye Area (REA)

REA EPDs reflect differences in an adjusted 365-day ribeye area measurement based on carcass measurements of harvested cattle. Sires with relatively higher REA EPDs are expected to produce better-muscled and higher percentage yielding slaughter progeny than will sires with lower REA EPDs. Ultrasound measurements are also incorporated into this trait and have been shown to be highly correlated with the performance of slaughter progeny. All data is expressed on a carcass scale.

### Marbling (MARB)

MARB EPDs reflect differences in an adjusted 365-day marbling score (intramuscular fat, [IMF]) based on carcass measurements of harvested cattle. Breeding cattle with higher MARB EPDs should produce slaughter progeny with a higher degree of IMF and therefore higher quality grades. Ultrasound measurements are also incorporated into this trait and have been shown to be highly correlated with the performance of slaughter progeny. All data is expressed on a carcass scale.

### Baldy Maternal Index (BMIS)

The BMIS is a maternally focused index that is based on a production system that uses Hereford x Angus cross cows. Progeny of these cows are directed towards Certified Hereford Beef. This index has significant weight on Sustained Cow Fertility, which predicts fertility and longevity of females. There is a slightly positive weight on Weaning Weight, Mature Cow Weight and Milk which accounts for enough growth but ensures females do not increase inputs. There is some negative emphasis on Dry Matter Intake, but a positive weighting on Carcass Weight which is anticipated to provide profitability from finishing of non-replacement females and castrated males. Marbling and Rib-eye Area are also positively weighted to keep the harvested progeny successful for CHB. This index is geared to identify Hereford bulls that will be profitable when used in a rotational cross with mature commercial Angus cows.

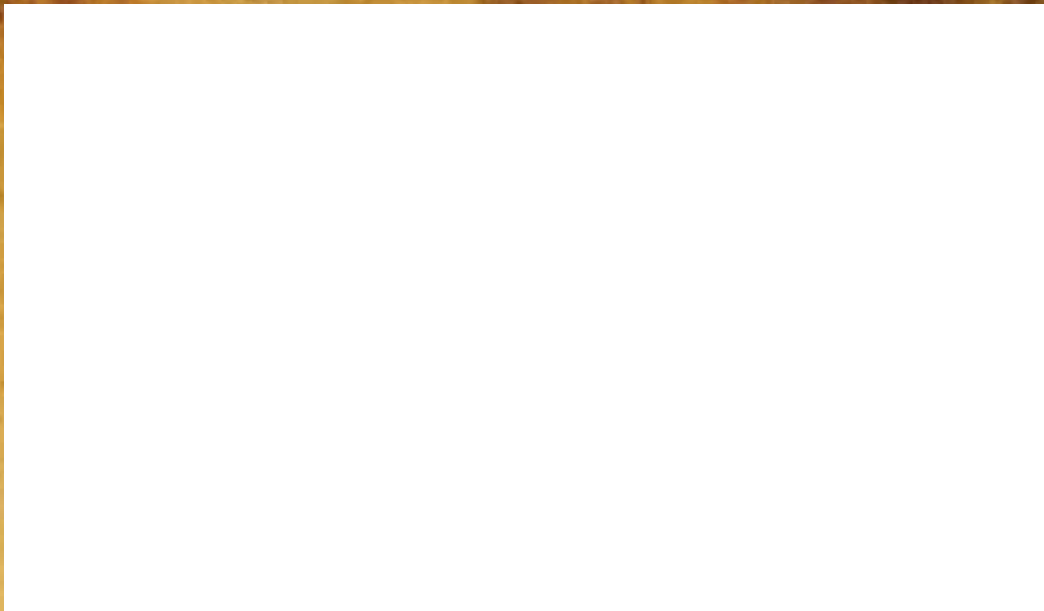
### Brahman Influence Index (BIIS)

The BIIS is a maternally focused index that is based on a production system that uses Brahman x Hereford cross cows. Progeny of these cows are directed towards a commodity beef market since Certified Hereford Beef® does not accept Brahman influenced cattle. This index has significant weight on Sustained Cow Fertility, which predicts fertility and longevity of females. There is a slightly positive weight on Weaning Weight, Mature Cow Weight and Milk which accounts for enough growth but ensures females do not increase inputs. There is some negative emphasis on Dry Matter Intake, but a positive weighting on Carcass Weight which is anticipated to provide profitability in finishing non-replacement females and castrated males. Marbling and Rib-eye Area are also positively weighted to keep harvested progeny successful for a variety of commodity based programs. This index targets producers that use Hereford bulls on Brahman influenced cows.

**Certified Hereford Beef Index (CHBS)** The Certified Hereford Beef Index (CHBS) is a terminal sire index that is built on a production system where Hereford bulls are mated to mature commercial Angus cows where all progeny will be targeted for Certified Hereford Beef after the finishing phase. This index has significant weight on Carcass Weight and Marbling to ensure profit on the rail. As well there is a positive weighting for Average Daily Gain along with a negative weighting on Dry Matter Intake to ensure efficient pounds of growth in the finishing phase. In addition, there is a positive weighting for Rib-eye Area and a negative weighting for Back Fat to maintain desirable Yield Grades. This is the only index that has no emphasis on fertility. Remember that no replacement heifers are being retained.



PO BOX 836  
Woodville, MS 39669



**LF CHURCHILL 4075 111 ET**  
Sire of Lots 309, 317, 323, and 332



**4M 66589 DOMINO 2079ET**  
Sire of Lots 334, 339, 370, 382, 3104, and 3107



**NJW 79Z 33B FORWARD 252F**  
Sire of Lots 328, 331, and 349



**B&D L1 DOMINO 9364 ET**  
Sire of Lots 353, 357, 366, 376, 377, 384,  
388, 397, 3100, and 3105

# SPRING BULL & FEMALE SALE